

# 3D Flowers & Butterflies

## INSTRUCTIONS

Page 1 of 12

All of the designs on this CD have been developed to create beautiful free-standing flowers, butterflies, and assorted bugs. Any of the projects can be mounted on stems, added to flower arrangements or around the base of a candle, attached to accessories (hair, clothing, handbags, belts, etc.), made into jewelry, used in gift wrapping, arranged in a mobile, made into a fridge magnet...the ideas are endless!!



### FLOWERS

Choose the desired project that you would like to create. If you are sewing a flower that will be stemmed, you will need to choose from the assortment of leaves provided. Any number of leaves is acceptable, our sample has 3 leaves of the same type, one smaller than the others for variety.

### Embroidery:

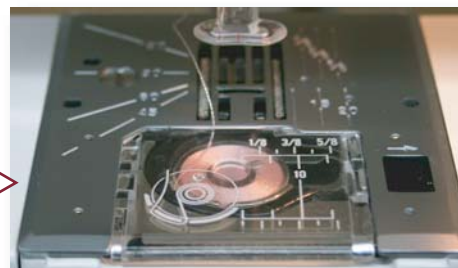
**Supplies:** Dissolving Fabric stabilizer (for best results).

Matching top and bobbin thread. ○



1) Transfer all designs to machine using your preferred method. (ATA PC card, direct transfer, "drag and drop")

2) Wind bobbins for all colours you want to use in the designs. Load the bobbin and thread the machine with matching first colour stop for the design. ○



Designs by:

**Stitchitize**

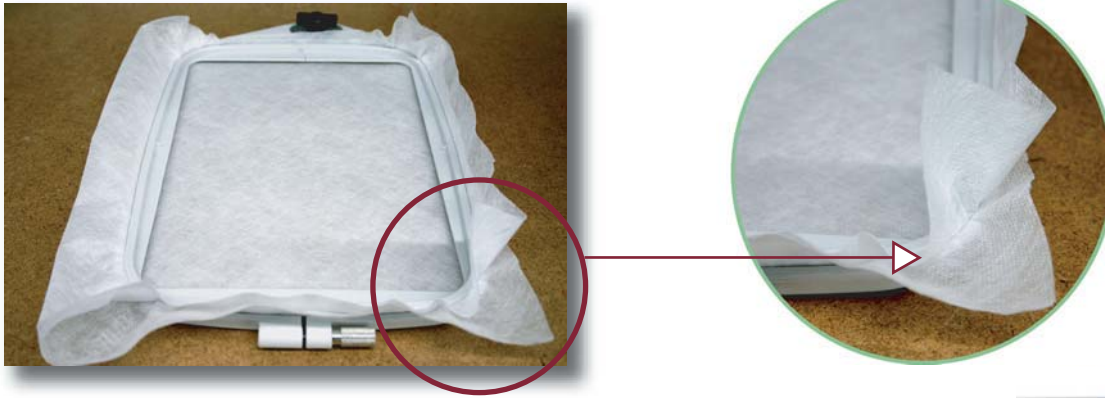
Embroidery Design Service

# 3D Flowers & Butterflies

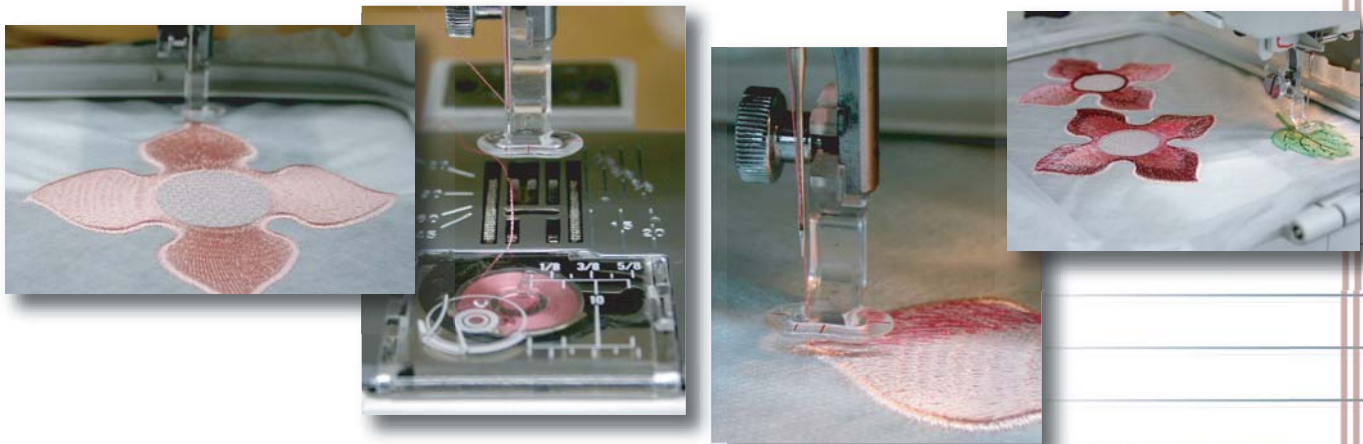
## INSTRUCTIONS

Page 2 of 12

3) Hoop 2 layers of dissolving Fabric stabilizer and attach hoop to machine.



4) Sew all designs. Remember to change the bobbin to match each colour stop's top thread.



5) Remove hoop from machine. Trim all threads from front and back.



6) Trim excess fabric stabilizer from around each design.





# 3D Flowers & Butterflies

## INSTRUCTIONS

Page 3 of 12

7) Run warm water over each design to dissolve the fabric stabilizer. If a small amount of stabilizer is still evident (design feels slightly sticky) this will allow you to shape the pieces. If you rinse all of the stabilizer away, you may need to use some spray starch to shape the pieces. Use paper towels to blot excess water.

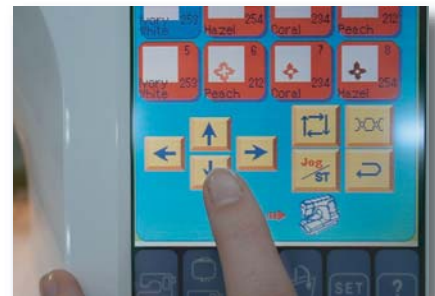


8) Shape each piece of the flower and leaves and set aside to dry. The pieces can be reshaped during the drying stage and can also be wet and re-shaped if desired.



To save time and dissolving fabric, combine as many designs as possible in one hooping. Use your machine to move your start position for each design. If your machine allows, run a perimeter trace before sewing each design to be sure that it will not sew too closely to other designs.

**OR**, use your design editing software to merge designs together to fit in larger hoops.



Designs by:

**Stitchitize**

Embroidery Design Service

# 3D Flowers & Butterflies

## INSTRUCTIONS

Page 4 of 12

### Stem Assembly:

**Supplies:** Pipe Cleaners  
Florist Tape  
All Embroidered and dried leaves

1) Start with 2 pipe cleaners.

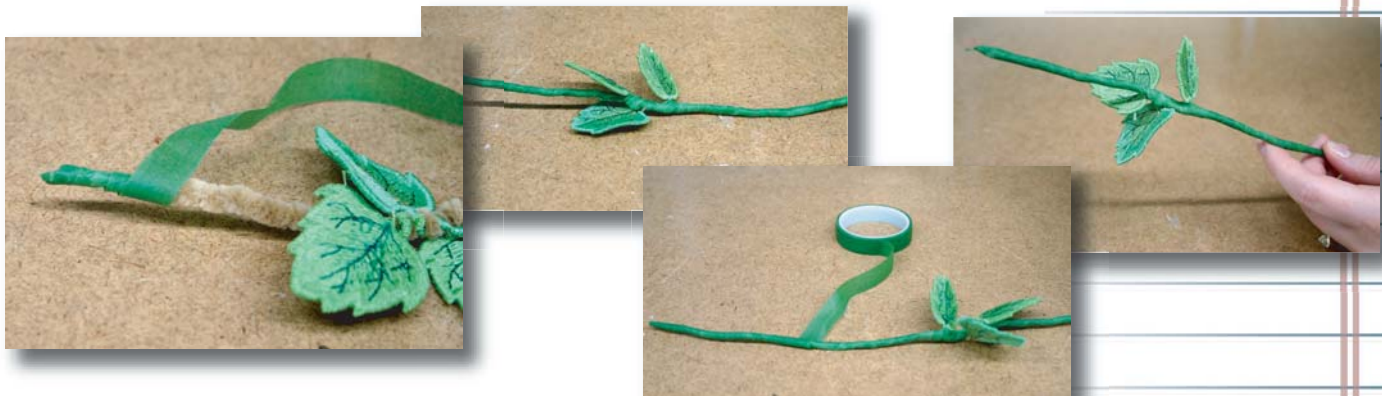
Twist together to approximately 1/3 the length.



2) Add the first leaf by twisting the stem into the pipe cleaners. Continue arranging and twisting in all leaves and twist pipe cleaners together to the end. It is OK if they do not match up at the end.



3) Wrap the florist tape around one end 2 or 3 times to secure and continue tightly wrapping the tape through the leaves to the other side. When you get to a leaf, wrap the tape on both sides and continue. Once you get to one end, wrap 2 or 3 times for strength and then turn and wrap back to the start.





# 3D Flowers & Butterflies

## INSTRUCTIONS

Page 5 of 12

### Flower Assembly:

**Supplies:** All Embroidered and dried parts (pieces) of the flower  
Completed stem  
Hot glue gun



1) Arrange all parts of the flower from top to base. Be sure to check which side is the top and which is the bottom (bobbin) side. Starting at the top layer, put a small amount of hot glue on the bottom side, in the middle, and attach to next layer. Repeat for all layers except base with hole in the center.



2) Insert and bend approximately 1/4" of the stem through the hole in the base from the top side to the bottom. This will sandwich the bobbin side of the base to the bobbin side of the flower.



# 3D Flowers & Butterflies

## INSTRUCTIONS

Page 6 of 12

3) Put a small amount of hot glue around the stem and attach the rest of the flower. Press and hold for a few seconds until the glue sets.

\* Please note: Our sample shown has two bases sewn from the same design in alternate green thread for added dimension.



### COMPLETED FLOWERS



**All** flowers from this CD are embroidered and assembled following these instructions.



# 3D Flowers & Butterflies

## INSTRUCTIONS

Page 7 of 12

### BUTTERFLIES

Follow embroidery steps previously described on pages 1 to 3 (Flower instructions), to complete all pieces of your chosen butterfly.

Glue according to the following order:



Arrange pieces



Glue beside top half of body



Add top wings



Glue beside bottom half of body



Add bottom wings



Glue along body

(continued on next page...)

# 3D Flowers & Butterflies

## INSTRUCTIONS

Page 8 of 12

### BUTTERFLIES cont.



Twist two pipe cleaners and add stem (if desired)



Glue along stem



Add body



### COMPLETED BUTTERFLIES & BUGS



**All** Butterflies & Bugs from this CD are embroidered and assembled following these instructions.



# 3D Flowers & Butterflies

## INSTRUCTIONS

Page 9 of 12

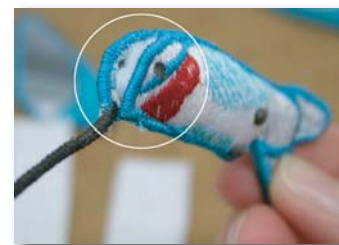
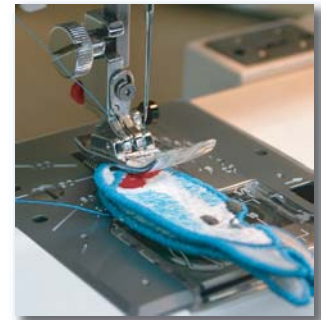
### HUMMINGBIRD

Follow embroidery steps previously described on pages 1 to 3 (Flower instructions), to complete all pieces of the hummingbird.

#### Hummingbird Assembly:

**Supplies:** All Embroidered and dried parts (pieces) of the hummingbird  
Stuffing - batting, small scrap pieces of fabric, etc.  
Needle and thread (of same colour as the bird border)  
Hot Glue Gun

- 1) Put wrong sides of 2 body parts together and pin one end.
- 2) Thread machine with same colour top and bobbin thread as the outer satin stitch border of the hummingbird.
- 3) With your machine in regular sewing mode on straight stitches, carefully and slowly sew exactly on the inside edge of the body parts. Leave a small opening (1/2" - 10mm) for stuffing.
- 4) Stuff the bird with small pieces of batting or scrap fabric. Be sure to get the first pieces of stuffing into the tail feathers.



- 5) Hand stitch to close the opening.

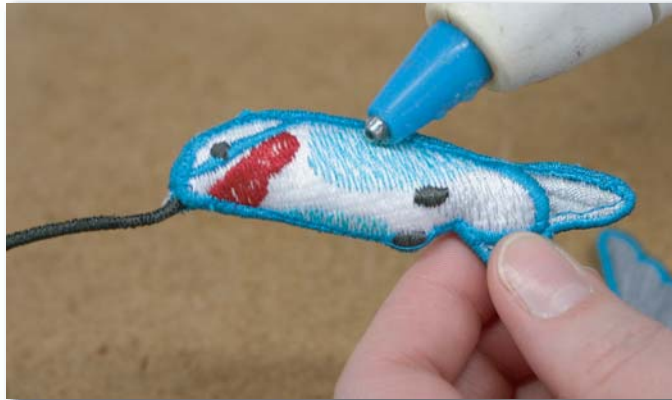


# 3D Flowers & Butterflies

## INSTRUCTIONS

Page 10 of 12

- 6) Glue the wings onto each side of the hummingbird. Angle them differently to look like the bird is in flight.



COMPLETED HUMMINGBIRD



# 3D Flowers & Butterflies

## INSTRUCTIONS

Page 11 of 12

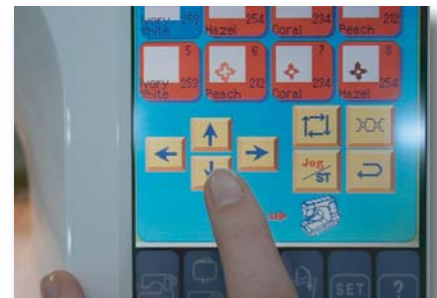
### TIPS AND EXTRAS

- ★ Polyester threads will not shrink during the wetting stage. You may need to scrunch and shape the leaves and flower petals while wet so that they don't dry perfectly flat.
- ★ Rayon thread will shrink which means the flower and butterfly parts will shape themselves.
- ★ Designs can be enlarged or reduced to make sets of flowers or butterflies of varying sizes.
- ★ Extra embellishments can be added to any of the projects (jewels, ribbon, glitter, beads, sequins, etc.)
- ★ Any number and combination of petals, bases and leaves will work for these projects. Using the same colour threads but changing the sequence that they sew will add to the realism of the flowers.
- ★ All of the finished pieces can be reshaped with a light spray of water.
- ★ Always hoop at least 2 layers of dissolving Fabric stabilizer for best results.



To save time and dissolving fabric, combine as many designs as possible in one hooping. Use your machine to move your start position for each design. If your machine allows, run a perimeter trace before sewing each design to be sure that it will not sew too closely to other designs.

**OR,** use your design editing software to merge designs together to fit in larger hoops.



# 3D Flowers & Butterflies

## DESIGN INDEX

Page 12 of 12



FS001



FS002



FS003



FS004



FS005



FS006



FS007



FS008



FS009



FS010



FS011



FS012



FS013



FS014



FS015



FS016



FS017



FS018



FS019



FS020



FS021



FS022



FS023



FS024



FS025



FS026



FS027



FS028



FS029



FS030



FS031



FS032



FS033



FS034



FS035



FS036



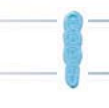
FS037



FS038



FS039



FS040



FS041



FS042



FS043



FS044



FS045



FS046



FS047



FS048



FS049



FS050



FS051



FS052



FS053



FS054



FS055

Designs by:

**Stitchitize**

Embroidery Design Service