

ITH-Reindeer Candy-Cane-Holders-4x4

Instructions



NLSEE2223-4x4
Stitch Count: 2,556
Size: 1.75 x 3.56 inches

ITH-Reindeer-Candy-Cane-Holders-4x4

Filenames & stitch counts



NLSEE2224-4x4
Stitch Count: 1,924
Size: 2.27 x 3.74 Inches



NLSEE2225-4x4
Stitch Count: 2,906
Size: 2.40 x 3.99 inches



NLSEE2226-4x4
Stitch Count: 1,902
Size: 2.43 x 3.75 inches



NLSEE2227-4x4
Stitch Count: 2,414
Size: 2.06 x 3.78 inches

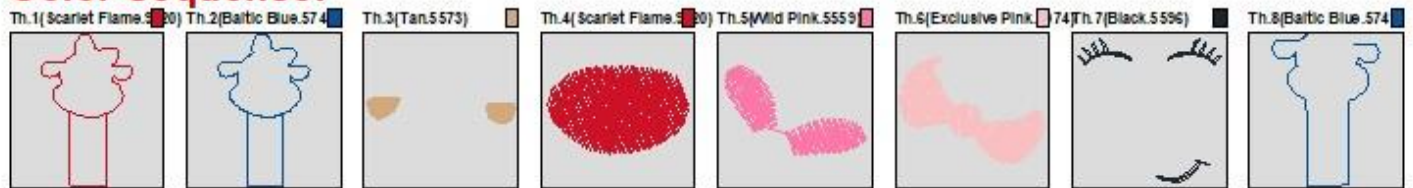
Materials/Cutting Chart (for each design in this set)

Materials	Number of Cuts	Size of Cuts
Felt (I used brown)	2 cuts	3 x 4 inches
Tear-Away Stabilizer	Enough for a 4x4 inch embroidery hoop	
NLSEE2224-4x4 design shows I have added a tiny, red, bow (Just glued on to top of reindeer's head)		

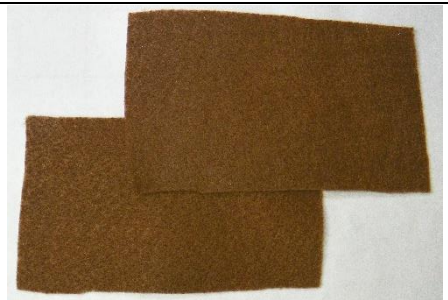
The Color Sequence Chart below will be referenced throughout these instructions.

NLSEE2225-4x4

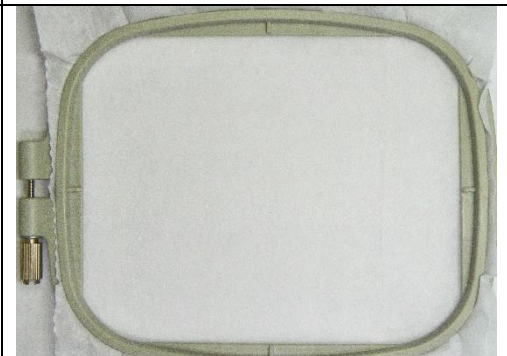
Color Sequence:



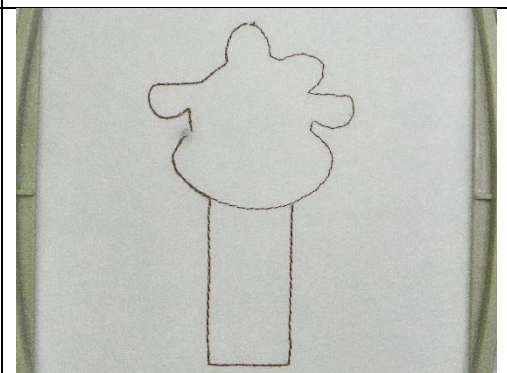
1. Prepare materials as indicated in Materials/Cutting Chart above and transfer design (NLSEE2225-4x4) to embroidery machine.



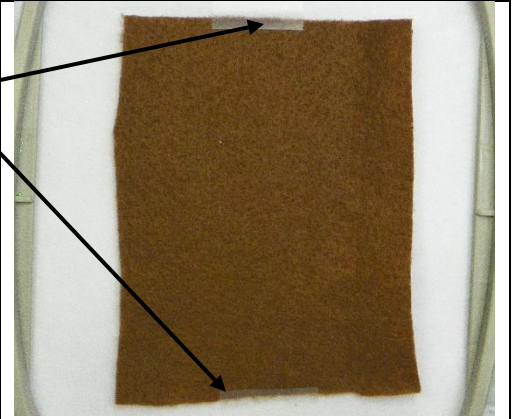
2. Hoop tear-away stabilizer in 4x4 inch embroidery hoop and attach to machine.



3. Thread needle with brown thread to match the felt color and sew #1 in the Color Sequence Chart. These stitches will create the **placement stitches** for the reindeer.



4. Remove hoop from machine, place on a flat surface with right side up.
5. Place one of the felt pieces over the placement stitches, secure with tape at top and bottom of the hoop and return hoop to machine.



6. Sew #2 in the Color Sequence Chart. These stitches will attach the felt piece to the stabilizer.



7. Change thread in needle to tan and sew #3 in the Color Sequence Chart. These stitches will create the inside of the ears.



8. Change needle thread to red and sew #4 in the Color Sequence Chart. These stitches will create the reindeer's nose.



9. Change needle thread to dark pink and sew #5 in the Color Sequence Chart. These stitches will create the inside of the bow.



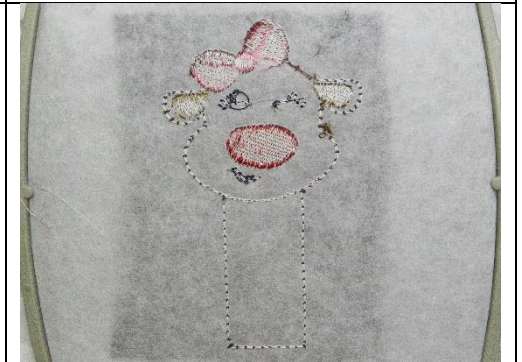
10. Change needle thread to light pink and sew #6 in the Color Sequence Chart. These stitches will create the rest of the bow.



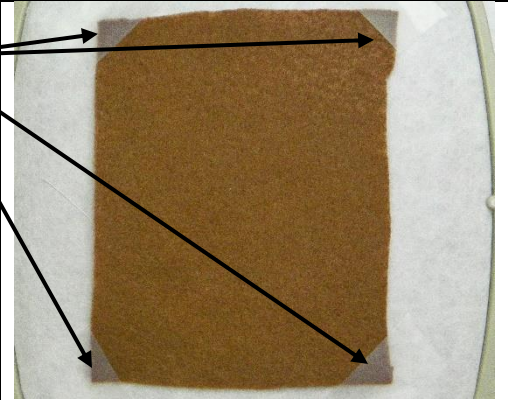
11. Change needle thread to black and sew #7 in the Color Sequence Chart. These stitches will create the eyes and mouth of the reindeer.



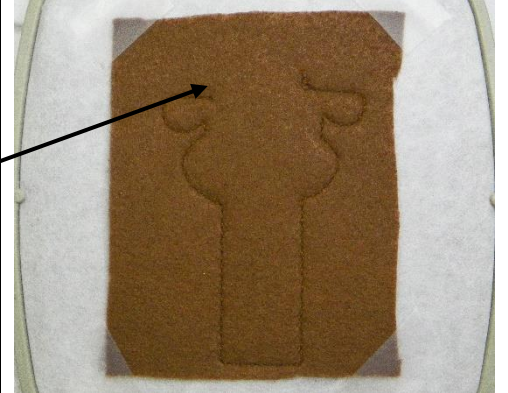
12. Remove hoop from machine, place on flat surface, back side up, and trim all thread tails.



13. Place the second piece of felt over the back of the hoop, line it up with front, felt piece and secure with tape in all four corners.



14. Return hoop to machine and sew #8 in the Color Sequence Chart. These stitches will attach the back, felt piece to the project. (Notice the top of the reindeer's head is not stitched down. This leaves an opening into which the candy canes are inserted.)



15. Remove hoop from machine and project from hoop and cut away the excess stabilizer from around the felt.



16. Using sharp scissors, cut around the outside stitching of the reindeer. . . about 1/8 inch outside of the design. (Make sure not to cut any of the stitches.)



17. Your design is completed and ready to receive the candy canes.

These designs can be used as ornaments, stocking stuffers and many more uses. Add a name to the bottom of the reindeer and you can even use them as place cards for your table.



For Design NLSEE2224-4x4 I added a tiny red bow with a tiny pearl to the top of the reindeer's head. Bow-ties could also be added to the male reindeer.

I have included the Color Sequence Charts below for the other designs in this set. They can be sewn in a similar way as outlined in these instructions. Notice the first two steps and the last step in the Color Sequence Charts are the same. The in-between steps depend on the reindeer design.