

Appliquè - Rag Kitten



.PES
.DST
.VP3
.JEF
.XXX
.HUS
.EXP

Digital
file

13x18
16x26
20x30

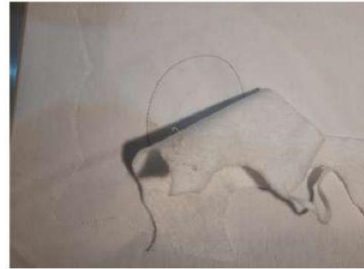
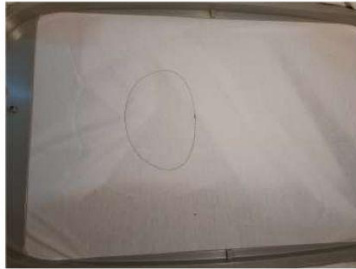
5x7"
6x10"
8x12"

WHAT IS NEEDED:

Stabilizer

Fur fabric

Cotton cutouts for applique



Stabilizer in the hoop together with the fabric

I embroider the position track - I embroider the cat's face track

I do the appliqué of the cat's face - I trim the excess fabric

I put on the rectangle of fur, fixed with pins

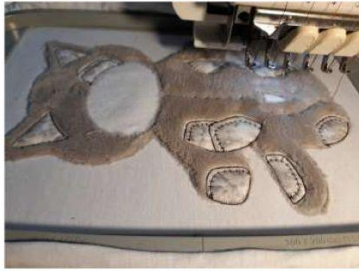
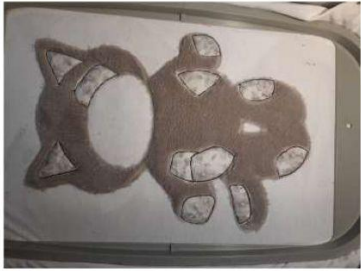
I embroider the next cat's faceracks



I cut out the entire outline of the cat - I start with all the applications

I embroider the position trace, place it on top of the fabric, embroider the next trace

Cut the excess fabric



I complete all the applications and proceed with the decorations
I embroider the entire cover stitch and finish with the kitten's face

