



DOUDOU SHEEP

This fact in a frame 10x10cm You will have 3 steps in 10x10cm

- 1-Les oreilles
- 2-The head
- 3-The arms

Hardware:

I did with Minky

Hypoallergenic stuffing, snap button, water-soluble support, sewing needle and sewing thread

FIRST STEP:

I start by making the ears and I always work out of frame, you can take the temporaire glue to help you First step put your support in your frame 10x10cm. Follow the steps on the step sheet that is with your file in .PDF

THE EARS

- 1- The first seam should be done on the support to tell you where to put your fabric, be careful to hide this seam well with your fabric. At each step, I take the measure that I need material to cover the seam well
- 2- The second seam is done on your fabric
- 3- Embroidery stitch inside your ear, here I put mylar paper, which gives a shine effect
- 4- Put the other piece of minky, place against place, this seam will finish your ears.

It remains only to get out of the frame, remove the excess tissue and return to the place, set aside until at the time of making the head.



THE HEAD:

- contour of the bottom of the head, this seam is done on your support to tell you where to put your fabric. Once this seam is finished, put your fabric to cover the entire seam



- Sewing your fabric on the support. Once this seam is done, remove the excess fabric from the top of your piece of fabric.



Sewing that is done on your support to tell you where to put your fabric for the top of the head, put your fabric and cover this seam well before moving on to the next step

Sewing your fabric on your support. Once this seam is finished, remove the excess fabric in the bottom of your piece of fabric.



Put on your water-soluble support before continuing. This support will help you have a beautiful finish for your embroidery

Once your embroidery stitches are finished, sewing to tell you where to put your fabric for the buckle on the top of the head, put your fabric to cover the part of the buckle, for fabrics like cotton, I always put a mesh so that my cotton does not fray



Sewing your fabric for the buckle

Bumblebee point all around the loop, remove your water-soluble support





Sewing to tell you where to put your ear, once this seam is finished, put your ear place against place taking care to cover the seam



Sewing your ear, be careful to hold in place before making this seam



Switch to the other ear in the same way



Put your fabric for the back of the head, place against place on your work

Seam that will bring together the back and the front of the head, to notice that there is a small part not sewn, this part will serve you to return your work to the place

Remove the excess fabric and leave a little more fabric at the place of opening, turn over.



THE ARMS

- 1- This seam is done on your support to tell you where to put your fabric, you must cover the seam with the fabric, put your fabric on your support
- 2- Sewing on your fabric to join it to your support
- 3- Sewing to tell you where to put your fabric for the next step, put your fabric place against place on the main fabric, you have to put the fabric on the edge of the seam (see photo)
- 4- Sewing your fabric paler for the tips of the arms, once this seam is finished, take your fabric and put it down to have the place of the fabric towards you. Take your 2nd piece of fabric for the arms, put place against place on your main fabric and do the next step
- 5- Seam to join the front and back of the arms.

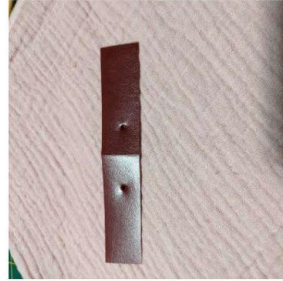
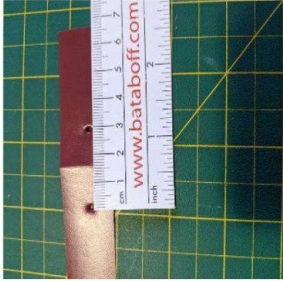


THE ASSEMBLY

All you have to do is do the assembly.

For the head, put your stuff, once well filled make an invisible seam to close :
[\(91\) Make an invisible seam by hand - YouTube](#)





Before closing the arms, put your pressure buttons to attach with the small cover, I made a template for the pressure buttons, take a piece of plastic, make a hole at 0cm and the other at 3cm from the first hole, this template will serve you to put your pressure buttons on the back of the arms and on the cover

Subsequently put the stuff and close with an invisible seam

Position your head on your arms, I put a little fabric glue to hold my head in place before sewing. Once your glue is dry and your head is in place, sew it with an invisible seam.

Take your blanket and decide where you will put your dog, put your snaps and join the pet on your small blanket.

PS: I always do at least 3 times the invisible seam so that it is really well sewn.

