



RACCOON BLANKET

This fact in a frame 10x10cm You will have 3 steps in 10x10cm

- 1-The ears
- 2-The head
- 3-The arms

Hardware:

I did with Minky

2 Pieces of 24cm x 24cm for the cover

dark gray.

You will need 3 colors of minky, white, light gray and

Hypoallergenic stuffing, snap button, water-soluble support, sewing needle and sewing thread

FIRST STEP:

I start by making the ears and I always work out of frame, you can take the temporary glue to help you

First step put your support in your frame 10x10cm. Follow the steps on the step sheet that is with your file in .PDF

- 1- The first seam should be done on the support to tell you where to put your fabric, be careful to hide this seam well with your fabric. At each step, I take the measure that I need material to cover the seam well
- 2- The second seam is done on your fabric
- 3- Sewing to tell you the location of your fabric for the inside of the ears, take the measurement and put your fabric over that seam before moving on to the next step
- 4- Sewing the fabric for the inside of the ears, once this seam is finished, cut the excess fabric.
- 5- Mbeing the other piece of minky, place against place, this seam will finish your ears.

It remains only to get out of the frame, remove the excess tissue and return to the place, set aside until at the time of making the head.



THE HEAD:

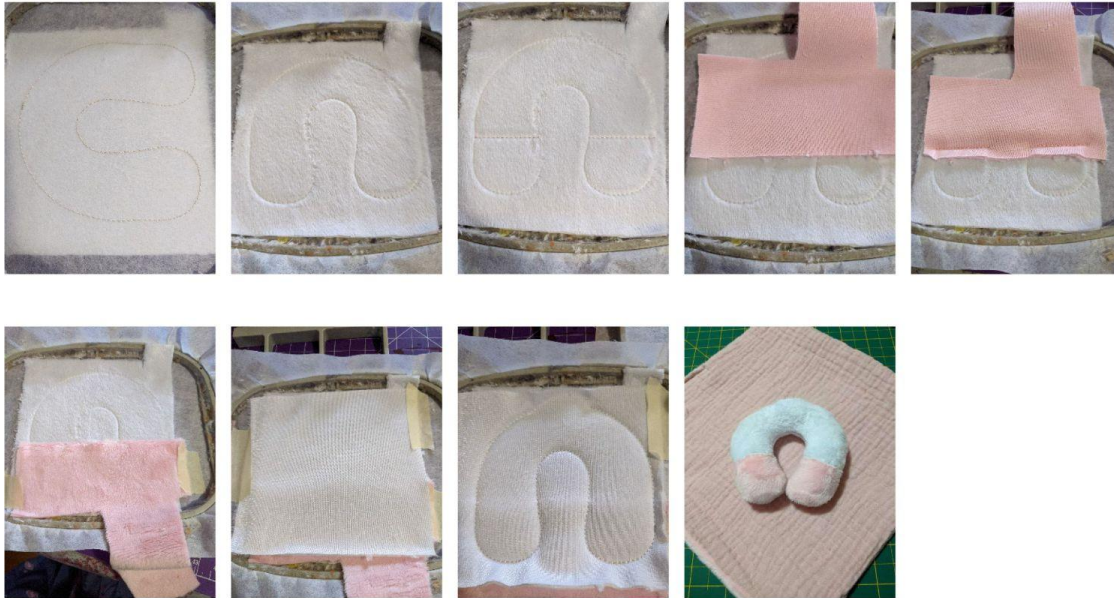
- 1- Sewing on your support to tell you the location of your piece of white fabric.
- 2- Sewing your white piece on your support, once this seam is finished, cut the excess fabric in the top and in the part of the eyes.
- 3- Sew on your stand to tell you the size and location of the top part of the head (pale gray), put on your fabric before moving on to the next step
- 4- Sewing your fabric from the top of the head to your support, once finished, remove the excess fabric on the bottom of this seam
- 5- Bumblebee point
- 6- Seam on your support to indicate the size and location of the eye part (dark gray) once this seam is finished, take the size of fabric you need and put it on this seam before moving on to the next step
- 7- Sewing your fabric on your support, once this seam is finished, remove the excess fabric.
- 8- Do the same process for the right eye part, before moving on to the embroidery stitch stage, put your water-soluble support on your work.
- 9- Make the embroidery stitches for the face
- 10- Once the embroidery stitches are finished, there will be a seam to tell you the location of the ears
- 11- Put your ear place against place and hold well in place, make the seam of your ear
- 12- Once the 2 ears are sewn, take a piece of fabric of 11x11cm for the back of the head, put place against place on your project, this seam will bring together the front and back of the head

Get out of the frame, cut the excess fabric and turn over



THE ARMS

- 1- This seam is done on your support to tell you where to put your fabric, you must cover the seam with the fabric, put your fabric on your support
- 2- Sewing on your fabric to join it to your support
- 3- Sewing to tell you where to put your fabric for the next step, put your fabric place against place on the main fabric, you have to put the fabric on the edge of the seam (see photo)
- 4- Couture of your fabric paler for the tips of the arms, once this seam is finished, take your fabric and put it down to have the place of the fabric towards you. Take your^{2nd} piece of fabric for the arms, put place against place on your main fabric and do the next step
- 5- Seam to join the front and back of the arms.



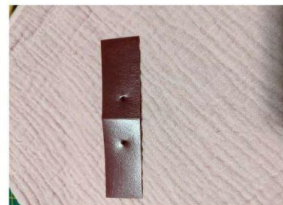
THE ASSEMBLY

All you have to do is do the assembly.

For the head, put your stuff, once well filled make an invisible seam to close : [\(91\) Make an invisible seam by hand - YouTube](#)



Before closing the arms, put your pressure buttons to attach with the small cover, I made a template for the pressure buttons, take a piece of plastic, make a hole at 0cm and the other at 3cm from the first hole, this template will serve you to put your pressure buttons on the back of the arms and on the cover



Subsequently put the stuff and close with an invisible seam

Position your head on your arms, I put a little fabric glue to hold my head in place before sewing. Once your glue is dry and your head is in place, sew it with an invisible seam.

Take your blanket and decide where you are going to put your dog, put your buttons pressed

and join the animal on your small blanket.



PS: I always do at least 3 times the invisible seam so that it is really well sewn.