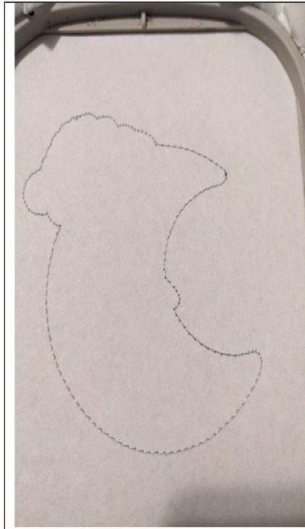




MOON



Seam 1: this seam is done on your non-woven stabilizer



Put your fleece on the seam



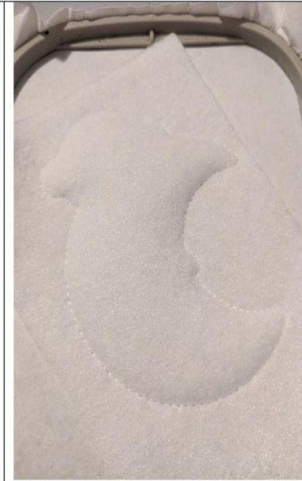
Seam 2: this seam will hold your fleece on your stabilizer



Cut excess fleece all the way around



Put your white felt Acrylic



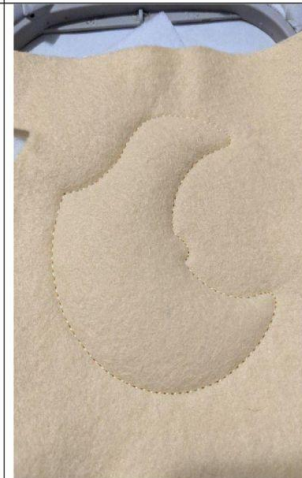
Seam 3: this seam will hold your felt on your stabilizer. "DO NOT CUT THE EXCESS"



Seam 4: this stitch tells you the location for your moon felt



Put your felt



Seam 5: This seam will hold your felt in place



Cut off excess felt



Sewing 6-7: embroidery stitches



Seam 8: this stitch tells you the location of your felt for the hat



Seam 9: this seam will hold your felt in place



Cut off excess felt



Sewing 10: embroidery stitches



Seam 11: this seam tells you the location for the tassel



Put your felt



Seam 12: this seam will hold your felt in place



Cut off excess felt



Seam 13: embroidery stitches on the tassel



Put your 2nd piece of acrylic felt on the back of your project (back of your frame)

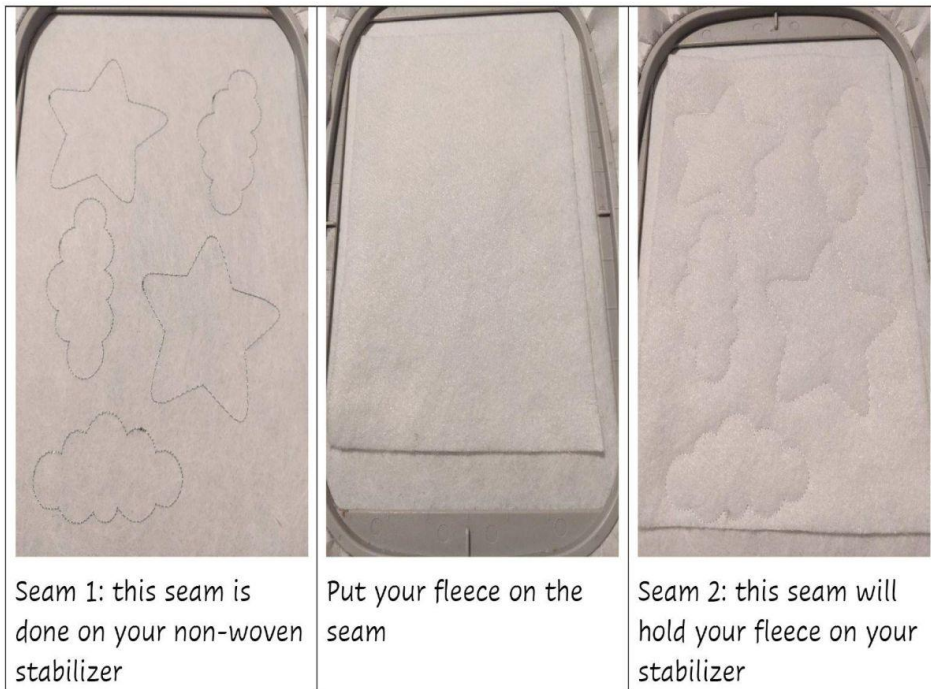


- Get out of the frame
- Cut excess felt all around
- Set aside until editing

Sewing 14: this seam will join your 2 acrylic felt together



STARS AND CLOUDS





Cut excess fleece all the way around



Put your white felt Acrylic



Seam 3: this seam will hold your felt on your stabilizer. "DO NOT CUT THE EXCESS"



Put your felt on the stars

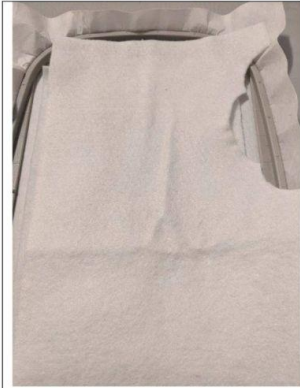
Seam 4: this seam will hold your felt on your stars



Cut excess felt all the way around



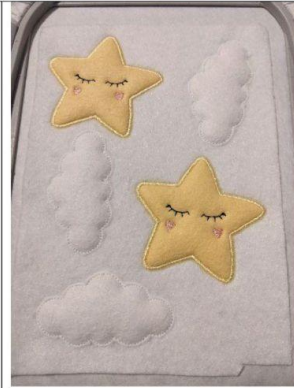
5-6-7 stitching: embroidery stitches



Put your white felt on the clouds



Seam 8: this seam will hold your felt in place



Cut off excess felt



Sewing 9: embroidery stitches



Put your 2nd piece of acrylic felt on the back of your work



Sewing 10: this seam will join your 2 acrylic felt together

THERE IS STILL A STAR TO MAKE IN THE 10X10CM FRAME IN THE SAME WAY



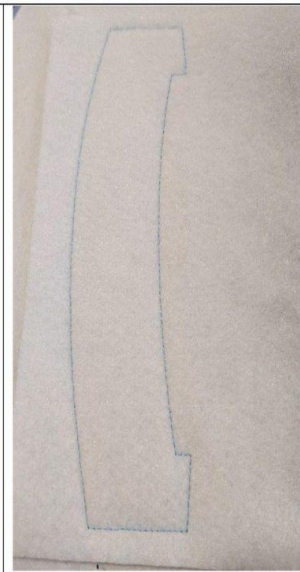
THE BANNER



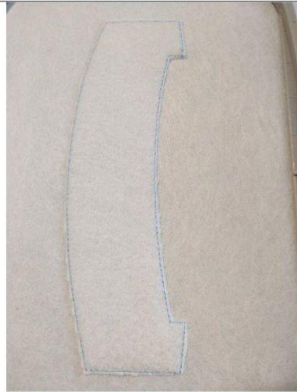
Seam 1: this seam is done on your non-woven stabilizer



Put your fleece on the seam



Seam 2: this seam will hold your fleece on your stabilizer



Cut excess fleece all the way around



Put on your felt or fabric



Seam 3: this seam will hold your felt or fabric in place

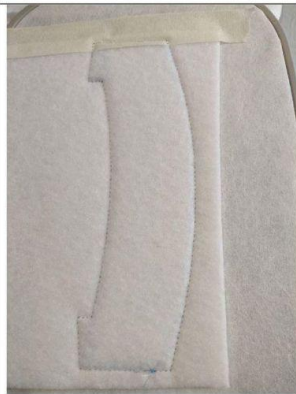
Seam 4: embroidery stitches in the points

Sewing 5: embroidery stitches

I did everything the same color



Put your acrylic felt on the back of your work



Seam 6: this seam will join your back felt with the front of your banner

Thinking outside the box
Cut off excess all around
Set aside until assembly

MAKE THE ENDS OF THE BANNER IN THE FRAME 10X10CM
IN THE SAME WAY



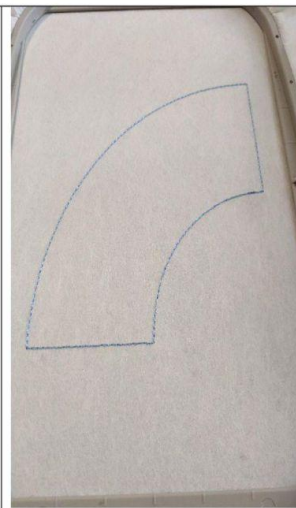
THE CROWN



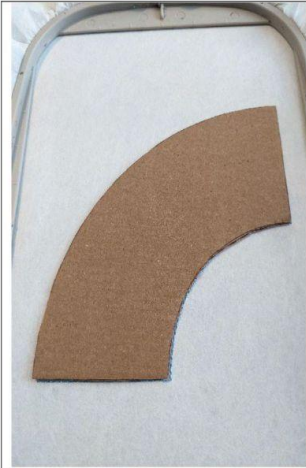
Print your pattern for cardboard



Cut your box



Seam 1: this seam is done on your non-woven stabilizer



Once your seam is finished, stick your cardboard inside the seam, I take ordinary white glue



Put your fleece on your cardboard



Seam 2: this seam will hold your fleece on your stabilizer



Cut excess fleece on the inside and outside of 1/4 of the crown



Put your felt



Seam 3: this seam will hold your felt in place



Sewing 4: embroidery stitches



Put your 2nd piece of acrylic felt on the back of your work



Seam 5: this seam will join your back felt with the front

Thinking outside the box
Cut excess felt or fabric
all the way around



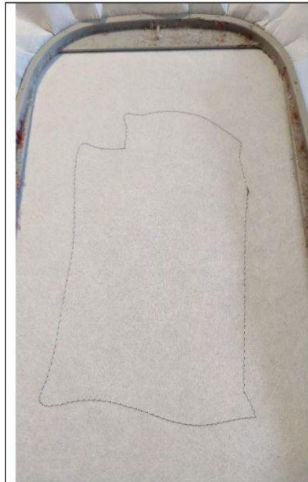
Do the other 3 part.

You can make different color



THE SLEEPING BEAR

UPPER BODY



Seam 1: this seam is done on your non-woven stabilizer



Put your fleece on the seam



Seam 2: this seam will hold your fleece on your stabilizer



Cut excess fleece all the way around



Put your white felt Acrylic



Seam 3: this seam will hold your felt on your stabilizer. "DO NOT CUT THE EXCESS"



Seam 4: this stitch tells you the location of your felt



Put your felt



Seam 5: this seam will hold your felt in place



Cut off excess all around



Sewing 6: embroidery stitches



Seam 7: this seam tells you the location of your felt



Put your felt on the seam, taking care to hide all the seam



Seam 8: this seam will hold your felt in place



Cut off excess all around



Sewing 9: embroidery stitches



Seam 10: this seam tells you the location of your Minky



Put your Minky on the seam in full



Seam 11: this seam will hold your Minky in place



Cut off excess all around



Put your water-soluble support



Sewing 12-13-14-15-16:
embroidery stitches

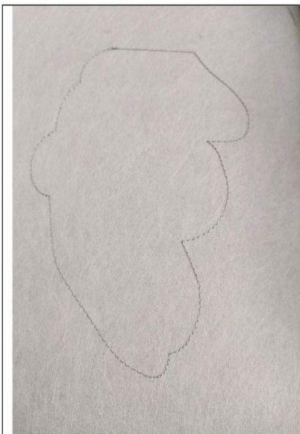


Put your 2nd piece of acrylic felt on the back of your work (back of the frame) well hold in place



Sewing 17: this seam will less your 2 acrylic felt together

LOWER BODY



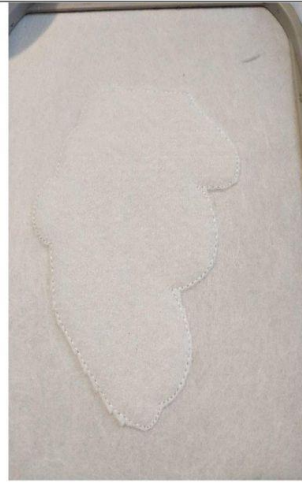
Seam 1: this seam is done on your non-woven stabilizer



Put your fleece on the seam



Seam 2: this seam will hold your fleece on your stabilizer



Cut excess fleece all the way around



Put your white felt Acrylic



Seam 3: this seam will hold your felt on your stabilizer. "DO NOT CUT THE EXCESS"



Seam 4: this stitch tells you the location of your felt for the cover



Put your felt on the seam



Seam 5: this seam will hold your felt in place



Cut off excess all around



Sewing 5-7: embroidery stitches



Seam 8: this seam shows you the location for your minky



Put your Minky on the seam



Seam 9: this seam will hold your Minky in place



Cut off excess all around



Seam 10: this seam tells you the location of your Minky



Put your Minky on the seam



Seam 11: this seam will hold your Minky in place



Cut off excess all around



Seam 12: this seam tells you the location for your Minky legs

Put your Minky on the seam

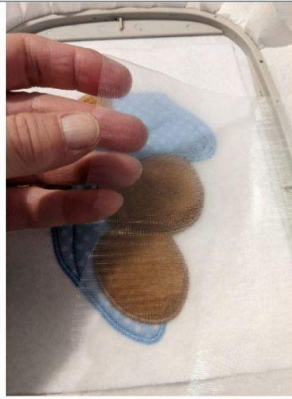


Seam 13: this seam will hold your Minky in place

Cut off excess all around



Sewing 14: embroidery stitches



Put your water-soluble support



Sewing 15: embroidery stitches



Put your 2nd piece of acrylic felt on the back of your project



Sewing 16: this seam will join the 2 felt pens together

Thinking outside the box
Cut off excess all around
Set aside until editing



ASSEMBLY



You must have all the parts



With your hot glue gun, start by gluing the crown. Stick a ribbon on the joint of each cartier of the crown



Stick the bottom on the top of the teddy bear, stick the star on the part of the blanket and pillow



Arrange your elements on the crown



Stick the 2 ends of the banner under the banner and stick the banner on the crown

All you have to do is put your little ring (or other) at the back to make the attachment