



BUTTERFLY DOLL

ANTENNAS



Seam 1: this seam is done on your tearable nonwoven stabilizer



Put your felt on top of your frame, hide all the seam well



Put your felt on the back of your frame, hide all the seam



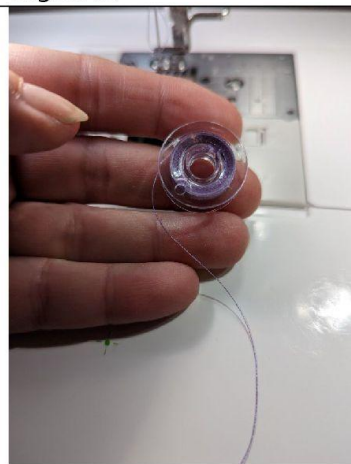
Seam 2: this seam will join your 2 felt pens together



Cut excess felt on top of your work



Cut the excess on the underside of your work



Make a spool of wire the color of your Minky for the wings



Put your Minky fabric on top and bottom of your work



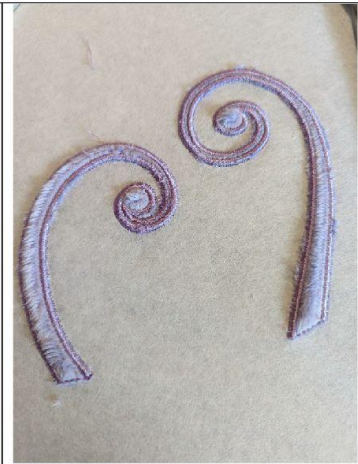
Seam 3: this seam will join your 2 Minky together



Cut excess fabric on top of your work



Cut excess fabric on the underside of your work



Seam 4: satin stitches



Put your different colored Minky on the bottom antennas, on the front and back of your frame. Cover the seams well



Sewing 5: this seam will join your 2 pieces of Minky together



Cut excess fabric on top of your work



Cut excess fabric on the underside of your work



Seam 6: satin stitches.

Get out of the frame, put aside

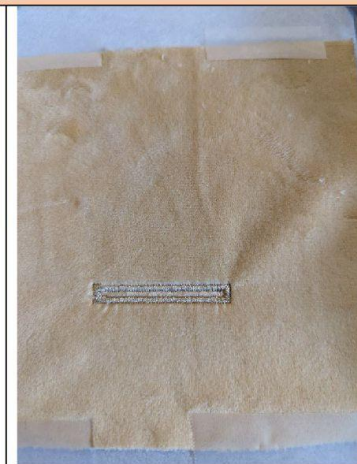
THE BACK OF THE HEAD



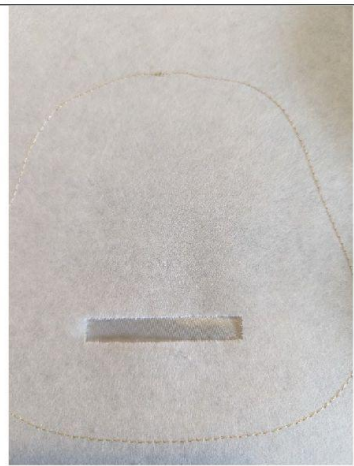
Seam 1: this seam is done on your non-woven stabilizer to tear to show you the location of your fabric



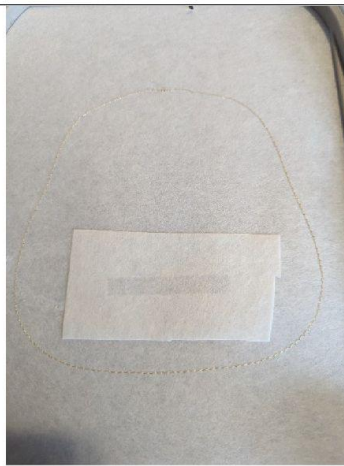
Put your Minky on the seam



Seam 2: buttonhole
Remove from your stabilizer and set aside.

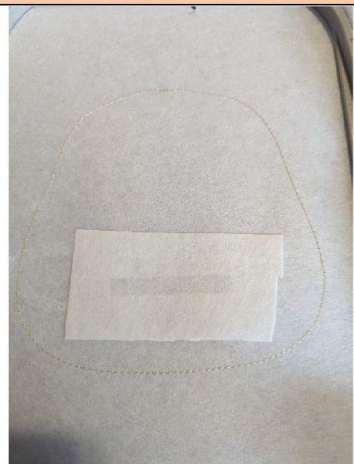


I keep the same stabilisator for the front of the head



I add a small piece of stabilizer at the opening

THE FRONT OF THE HEAD



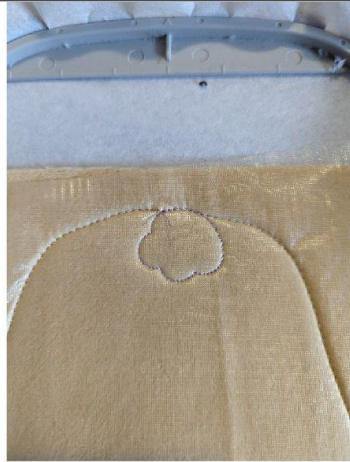
Seam 1: This seam is done on your stabilizer to tell you the location of your fabric.



Put your fabric and water-soluble stabilizer on the seam



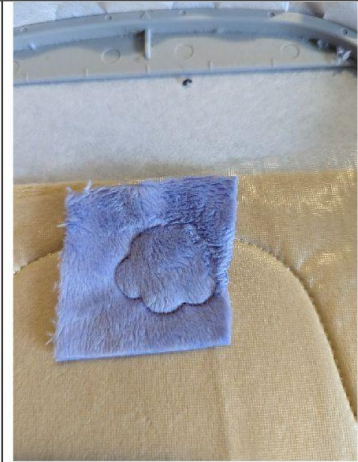
Seam 2: this seam will hold your fabric and stabilizer in place



Seam 3: this seam tells you the location of your fabric



Put your little Minky piece on the seam



Seam 4: this seam will hold your fabric in place



Cut excess fabric all around



Sewing 5-6-7-8-9-10: embroidery stitches



Put your Mylar on the cheeks (optional)



Seam 11: embroidery stitches in the cheeks



Seam 12: this stitch tells you the location for the antennae of the head



Put antennas in the indicated place, hold well in place



Seam 13: this seam will hold your antennas in place



Make sure that the antennae are in the center of the head so as not to sew them with the next seam



Take your piece from the back head and position it in exactly the same place as your fabric for the front of the head



Seam 14: this seam will join the front with the back of the head



Get out of the frame, cut the excess and put in the place

WINGS



Seam 1: this seam is done on your stabilizer to indicate the location of your fabric



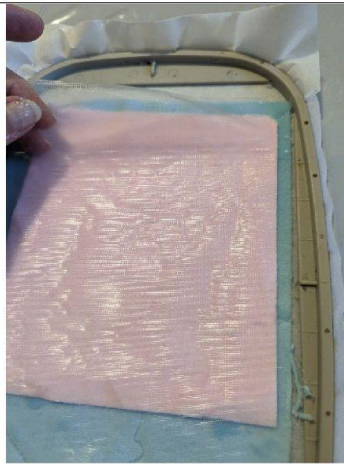
Put your fabric to hide the entire seam



Seam 2: this seam will hold your fabric in place



Seam 3: this seam tells you the location of your fabric (here I am pink)



Put on your Minky and your water-soluble stabilizer, taking care to hide all the seam



Seam 4: this seam will hold your fabric and stabilizer in place



Cut excess fabric all around



Seam 5: this seam tells you the location of your fabric (here it's pink)



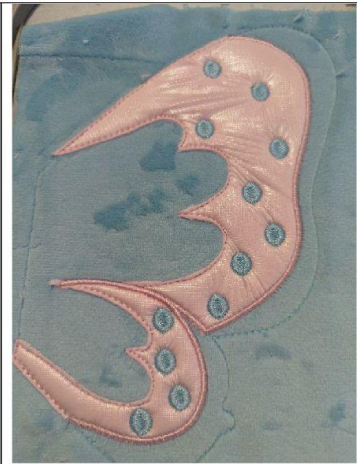
Put your fabric and water-soluble stabilizer



Seam 6: this seam will hold your fabric and stabilizer in place



Cut excess fabric all around



Sewing 7-8-9: embroidery stitches



Put your fabric on the remaining part



Seam 10: this seam will hold your fabric in place



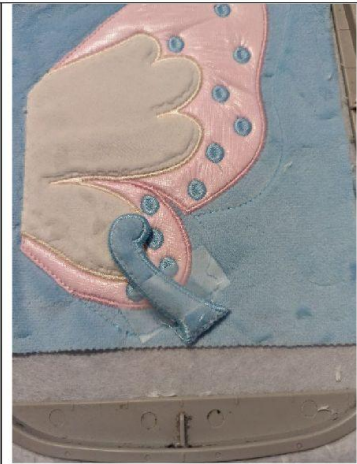
Cut excess fabric all around



Seam 11: satin stitches



Seam 12: this seam tells you the location of the small part of your wing



Put your little one in place and maintain well



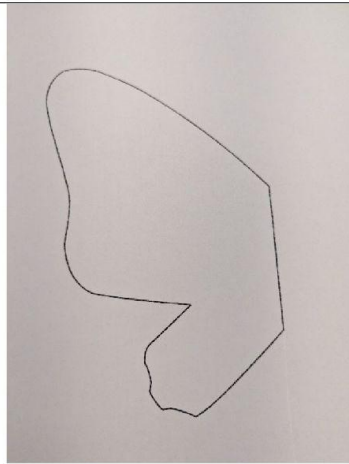
Sewing 13: sewing your small part in place



Put your Minky piece, place against place, to cover your entire wing



Seam 14: this seam will join the back with the front of your wing



Print the pattern for the Heatnbond

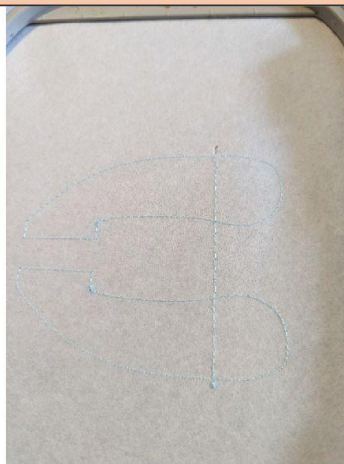


The Heatnbond is a thermo-adhesive on both sides, I stick it on my wings so that they stand straight

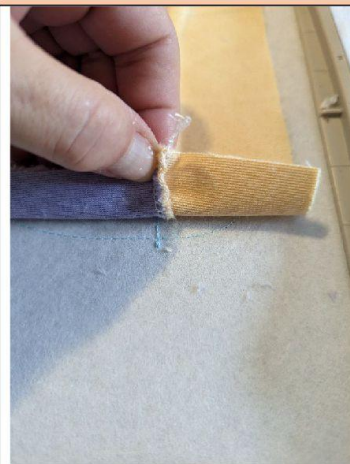
THE ARMS



Cut your 2 pieces and put place against place. Sewing with a sewing machine



Seam 1: this seam is done on your stabilizer, it tells you the location for your fabric



Put the joint of your fabric on the line that crosses the 2 arms, let the fabric protrude towards the top of your frame



Put your water-soluble support



Seam 2: this seam will hold your fabric and stabilizer in place



Seam 3: fancy stitches



Fold the part that is in the top of your frame on the sewn part. Take care to make the junctions of the seams coincide (hand and arms)



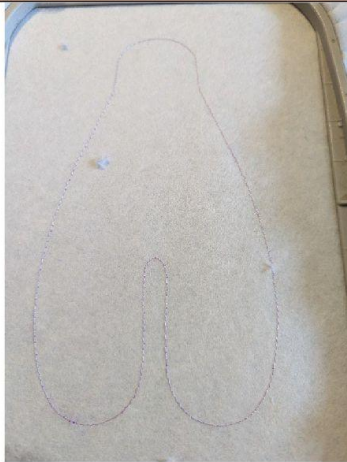
Here I put adhesive tape so that my embroiderer's foot does not get caught in the seam



Seam 4: this seam will join the front with the back of your arms.

Get out of the frame, cut off excess fabric and set aside

THE BODY



Seam 1: this seam is done on your stabilizer to indicate the location of your fabric



Put your fabric and water-soluble stabilizer on the seam



Seam 2: this seam will hold your fabric and stabilizer in place

Stitching 3-4-5-6-7:
embroidery stitches



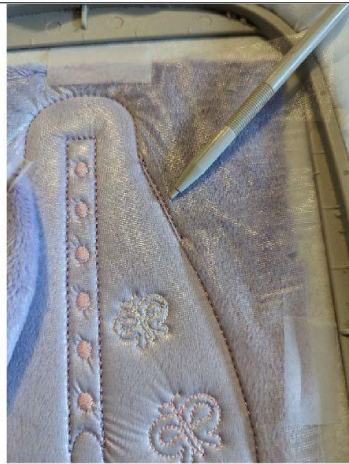
Seam 8: this seam tells you the location of your arm



Put your arm well hiding the seam. Be careful to put the little butterfly on your arm place to place



Seam 9: this seam will hold your arm in place



Seam 10: seam to tell you the location of the 2nd arm



Keep it in place



Seam 11: this seam will hold your arm in place



Place your arms so that it is inside the seams



Put your 2nd piece of Minky, place against place



Seam 12: this seam will join your front with the back of your body

ASSEMBLY



Put your heat n bond on your wings



Put the stuffing in the arms, body and head, sew the openings with an invisible seam and waxed thread (upholstery thread)



Insert the body into the buttonhole, your body will be inserted into the head. Hold in place

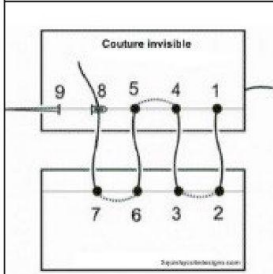


Diagram of an invisible seam



Make your invisible seam all around the head by passing at the top of the buttonhole so that you can no longer see the buttonhole once finished. Pass at least 3 times



Here you have to stitch much lower than the buttonhole to have a straight head. If you follow the buttonhole your head will go backwards



You should have this once your head is in place.



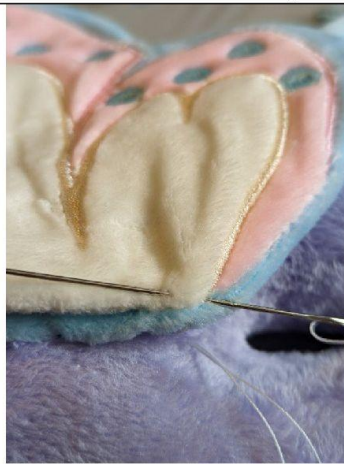
On the back, with an eraser pencil, make your lines to tell you the location of each wing



Hold in place



Make an invisible seam by taking only the fabric from the back of your wing



Once the back is finished, put your wing so as to see the place and make the invisible seam by penalizing the front of the fabric only you can do 2 times



Here the doll is finished.

If you resize or modify this design in any way, I cannot guarantee a quality point.

You can sell items made with these embroideries but you can NOT share, copy, exchange or resell this file in part or in whole in any format.