



## DOUDOU LADYBUG

This fact in a frame 10x10cm You will have 4 steps in 10x10cm

- 1-Antennas
- 2-The head
- 3-The arms
- 4- The wings

Hardware:

I did with Minky

1 Piece of 8x7cm for the bottom of the antennas (black)

1 piece of 10x5cm high for the red part of the antennas

1 piece of 10x10cm black for the back of the antennas

2 Pieces of 11cm x 11cm black for the arms

1 Piece of 10x8cm for the lower face

1piece of 11x 10cm for the top of the head (black)

1 piece of 11x11cm black for the back of the head

2 pieces of 11x7cm high red for the wings

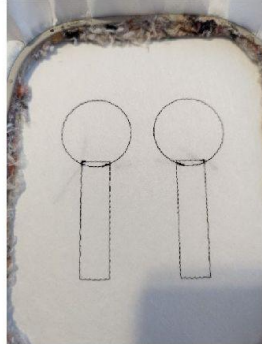
Size of your choice for coverage

Hypoallergenic stuffing, Pressure button, water-soluble

support, sewing needle and tapestry thread

### ANTENNAS

Put your tearable stand in your frame.

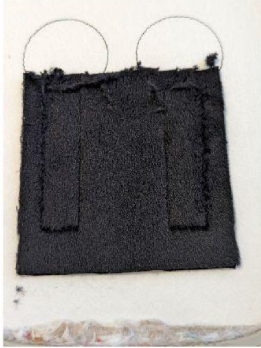


done on your support to tell you the location of your fabric

Stop 1 and 2 are



Put your black fabric on the seams, take care to hide the seams well



Make stop #3, this seam will hold your fabric on your support

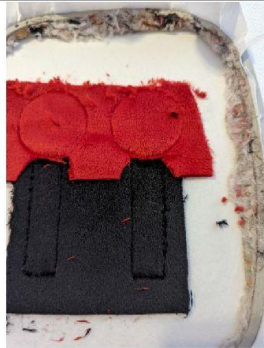


Put your red

fabric in the top (seam in circles)



Make stop #4 that will hold your fabric on the support



Remove excess tissue in the red and black joint



Put

your piece of black fabric, place against place



Make stop #5, this seam will sew your 2 pieces together. Get out of your frame, remove the support and cut the excess fabric

## THE WINGS



Stop 1 does this on your support to tell you the location of your fabric



Once your sewing is finished, put on your fabric and water-soluble support



Make stop 2, this seam will sew your fabric and water-soluble support on your base support



Stop No. 3: embroidery stitch



Once your embroidery stitches are finished, take your 2<sup>nd</sup> piece of fabric and put it place against place on your work



Make the last seam (stop 4) this coutre will sew your 2 pieces together.

Get out of the frame, remove your support and cut the excess fabric



## THE ARMS



Stop #1: This fact on your stand to tell you the location of your fabric



Put your fabric on this seam taking care to hide this seam well



Stop #2: this seam will hold your fabric on your support



Put your<sup>2nd</sup> piece of fabric, place against place on your work



Stop #3: This seam will sew your 2 pieces together.

Get out of the frame, remove the support and cut the excess fabric

## THE HEAD

		
<p>Stop 1 and 2 are done on the support to tell you the location of your fabric</p>	<p>Put your piece of fabric for the lower face and your water-soluble support</p>	<p>Stop #3: This seam will sew your fabric and water-soluble support on your support</p>
		
<p>Remove excess tissue in the top part</p>	<p>Put your fabric for the top of the head</p>	<p>Stop #4: this seam will sew your fabric on your support</p>
		
<p>Remove excess tissue in the lower part of the head (black)</p>	<p>Stop from 5 to 8: embroidery stitch</p>	<p>Stop #9: This seam tells you the location of your antenna</p>

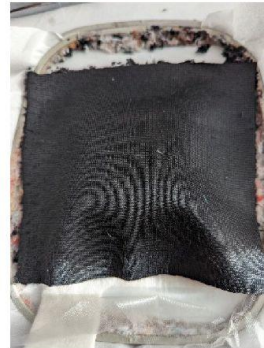


Place your antenna place against place on the seam of stop #9, hold in place



Stop 10: Sewing your antenna onto your fabric.

Make stop 11 and 12 in the same way as 9 and 10



Once your 2 antennas are in place, put your<sup>2nd</sup> piece of fabric place against place.

I suggest you put the speed of your embroiderer to a minimum to follow your fabric when sewing



Stop 13: sewing your 2 pieces together.

Once done, remove from your frame, remove the support and cut the excess fabric



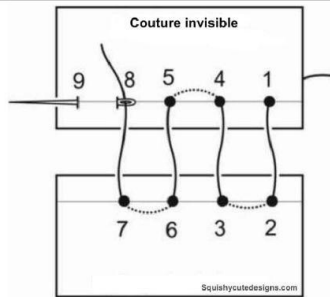
You

should have this: head with antenna, arms and wings



## THE ASSEMBLY

For the head, put your stuff, once well filled make an invisible seam to close



If you put on press buttons, it must be done before putting the stuff. Here I made a template with 3 cm between the 2 holes



Once you have put the plug and close your seam of the arms, it is necessary to position the head. Set up and make an invisible seam all around. I do with tapestry thread and at least 3 turns so that it is solid



Position your wings on the back. I put at the junction of the head and arms



This template will be used to put your buttons press on the back of the arms and on the cover

