



#### THE HEAD



Seam 1: this seam is done on your non-woven stabilizer to be cut



Put your fleece on the seam, taking care to cover the entire seam



Seam 2: this seam will hold your fleece on your stabilizer



Cut off excess fleece



Put your first piece of Acrylic felt on your fleece



Seam 3: this seam will hold your Acrylic felt in place

Seam 4: this stitch tells you the location of your pale pink felt



Put your pale pink felt on the entire seam



Seam 5: this seam will hold your felt in place



Cut excess felt all the way around



Sewing 6: embroidery stitches



Sewing 7-8-9: embroidery stitches



Seam 10: this stitch tells you the location for your red felt



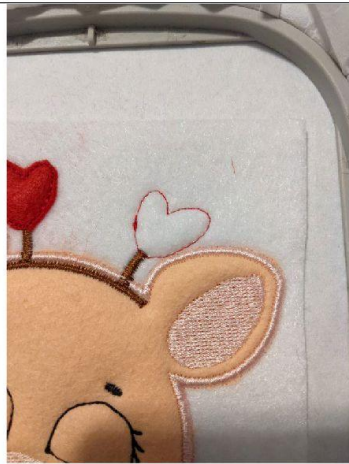
Put the felt on the seam



Seam 11: this seam will hold your felt in place



Cut excess felt all the way around



Seam 12: this seam tells you the location of your 2nd heart



Put your felt on the seam



Seam 13: this seam will hold your felt in place

Cut excess felt all around the heart



Sewing 14: embroidery stitches



Put your 2nd piece of white Acrylic felt on the back of your frame, hide all the seams



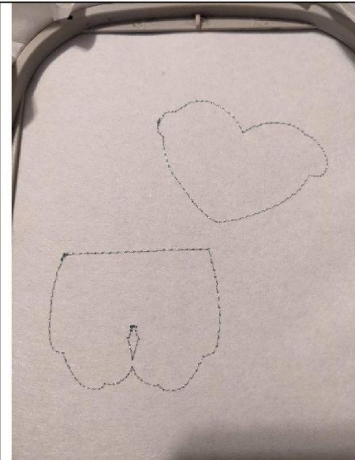
Sewing 15: This seam will join your 2 Acrylic felt together



Get out of your frame,  
cut the excess all around

You should have this on  
the back of your project

#### THE HEART AND THE BOTTOM



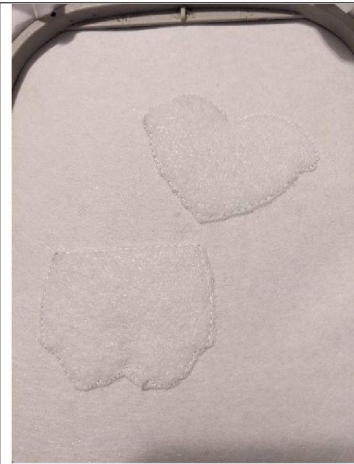
Seam 1: this seam is  
done on your non-woven  
stabilizer to be cut



Put your fleece on the  
seam, taking care to  
cover the entire seam



Seam 2: this seam will  
hold your fleece on your  
stabilizer



Cut off excess fleece



Put your first piece of Acrylic felt on your fleece



Seam 3: this seam will hold your Acrylic felt in place



Seam 4: this stitch tells you the location of your pale pink felt



Put your felt on the seam



Seam 5: this seam will hold your felt in place



Cut off excess felt



Sewing 6: embroidery stitches



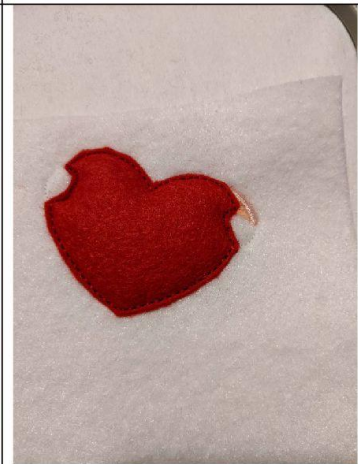
Seam 7: this seam tells you the location of your felt



Put your felt on the seam



Seam 8: this seam will hold your felt in place



Cut off excess felt



Sewing 9: embroidery stitches



Seam 10: this seam tells you the location of your felt



Put your felt on the seam



Seam 11: this seam will hold your felt in place



Cut off excess felt



Seam 12: this seam tells you the location of your felt





Put your felt on the seam



Seam 13: this seam will hold your felt in place



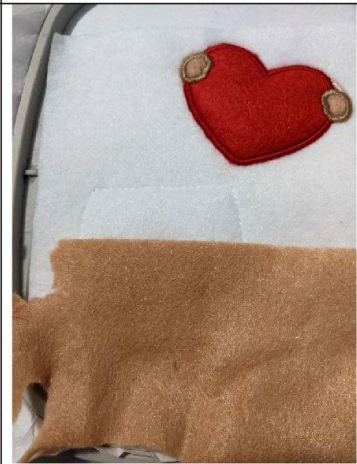
Cut off excess felt



Sewing 14: embroidery stitches



Seam 15: this stitch tells you the location of your felt



Put your felt on the seam



Seam 16: this seam will hold your felt in place



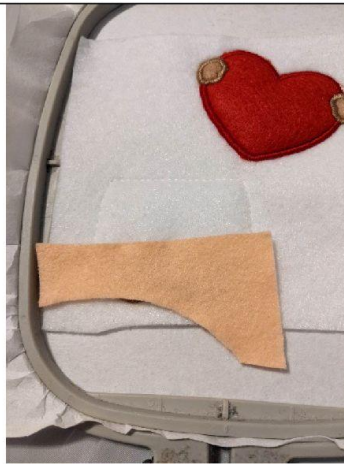
Cut off excess felt



Sewing 17: embroidery stitches



Seam 18: this seam tells you the location of your felt



Put your felt on the seam



Seam 19: this seam will hold your felt in place



Cut off excess felt



Sewing 20: embroidery stitches



Seam 21: this stitch tells you the location of your felt



Put your felt on the seam



Seam 22: this seam will hold your felt in place



Cut off excess felt



Sewing 23-24:  
embroidery stitches



Put your 2nd piece of  
white Acrylic felt on the  
back of your project

Sewing 25: This seam  
will join your 2 Acrylic  
felt together



Get out of the frame and  
cut the excess felt all  
the way around

## ASSEMBLY



Assembly is done with a hot glue gun.

Stick your heart on the head of the little pig.

Then stick the pants under the heart

Here I put a small stick because I wanted to put it in a flower pot but you can make a decoration for any other project.

Thank you, have fun

If you resize or modify this design in any way, I cannot guarantee a quality point.