



Christmas Wreath

FRAME 16X26CM

FINISHED SIZE: 30X30CM

Materials:

Crown: 2 pieces of fleece of 18x28cm - 2 pieces of white felt, basic quality - 2 pieces of cotton of 18x28cm - 2 rigid cardboard (see plan)

Candy: 1 piece of fleece of 14x16cm – 2 pieces of basic white felt of 14x16 – 1 piece of quality white felt of 14x16cm

Poinsettia: 1 piece of fleece of 17x24cm - 2 pieces of white base felt of 17x24cm - 1 piece of quality felt of green color of 17x24cm - 1 piece of quality felt of red color of 17x24cm

Candy cane: 1 piece of fleece of 14x11cm – 2 pieces of

basic quality felt of white color of 14x11cm – 1 piece of good quality white felt of 14x11cm – 1 piece of good quality red felt of 14x11cm

Mother Christmas: 1 piece of fleece of 15x14cm – 2 pieces of white base felt of 15x14cm – 1 piece of felt skin color of 13x10cm – red and white felt

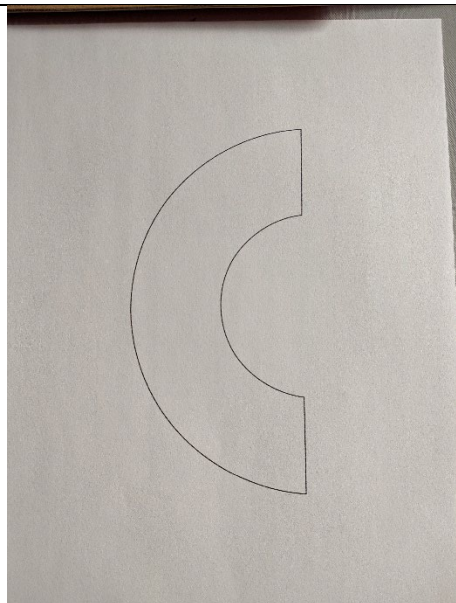
Santa Claus: 1 piece of fleece of 15x15cm – 2 pieces of white base felt of 15x15cm – 1 piece of felt skin color of 11x8cm – 1 piece of red felt of 15x12cm – 1 piece of good quality white felt of 20x20cm

Tape for fastener, one fastener, hot glue gun

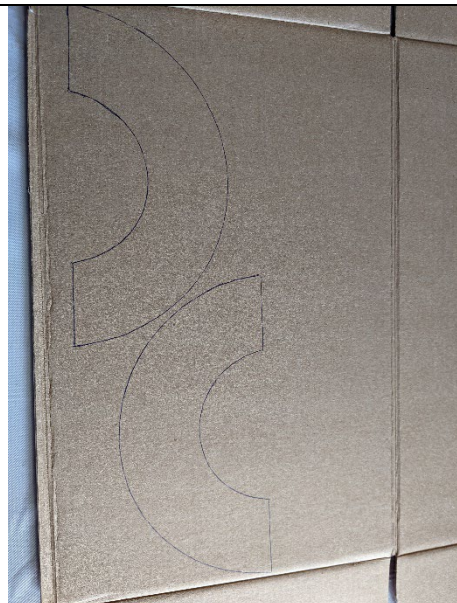
If you resize or modify this design in any way, I cannot guarantee a quality point.

©Copyright 2022 by Broderie D'Zhiboux.

Crown to be made 2 times



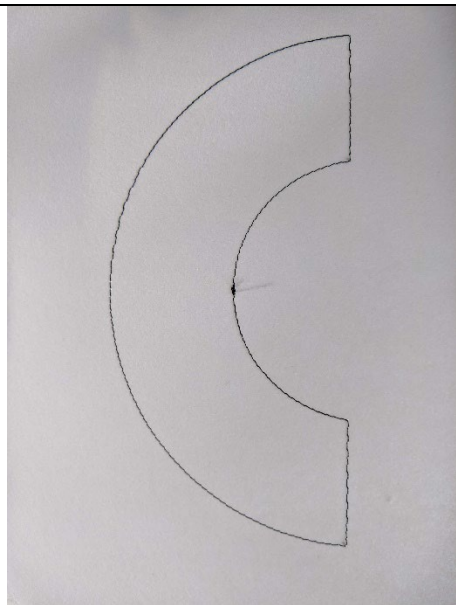
Print the plan for the boxes



Transfer to rigid cardboard



Cut the 2 parts



Make the first stitching on your support



Put glue on the inner part only



Glue the cardboard on your support, position well on the seam



Make the second seam, this seam tells you the location of your fleece



Put on your fleece, taking care to hide all the seam completely



This seam will hold your fleece on your support



Cut excess fleece all the way around



Put your first piece of lower quality white felt on the fleece



This seam will hold your felt in place
Do not cut***



Put your fabric on your felt, taking care to hide all the seam



This seam will hold your fabric in place



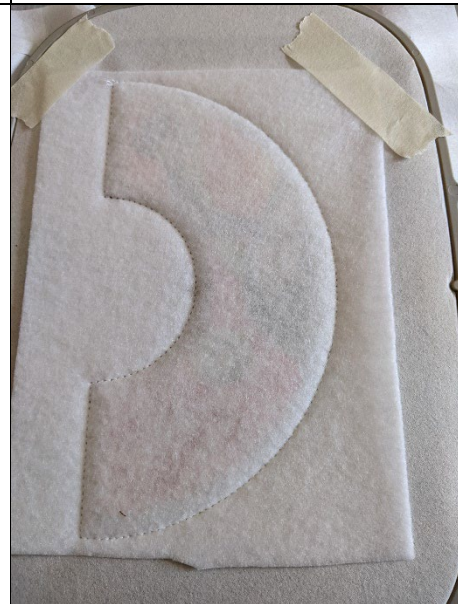
Cut excess fabric all around



Make the embroidery stitch on the fabric



Before making the last seam, put your 2nd piece of white felt on the back of your frame, keep in place

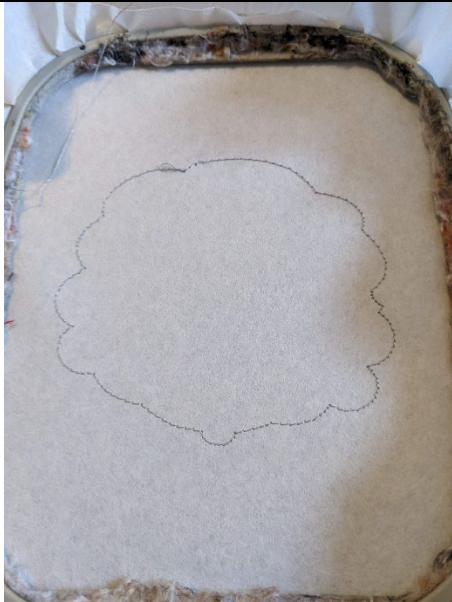


Make the last seam that will join your 2 felt together, you should have this on the back of your frame



Make the 2nd piece, on one of the 2 pieces, leave a little more fabric to make the assembly

Here I show you Santa Claus, take note that all the pieces are made in the same way



The first seam is done on your support to indicate the location of your fleece



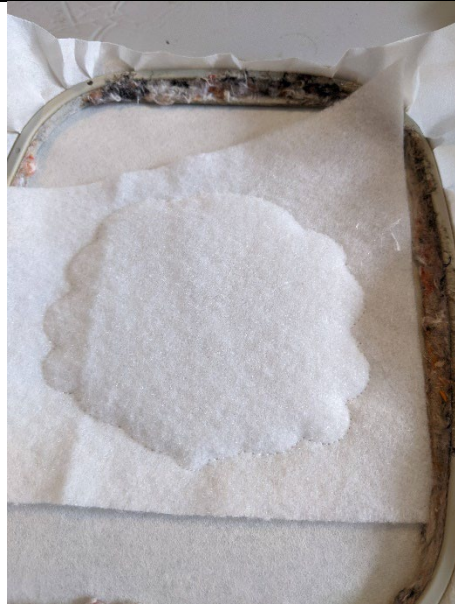
Put on your fleece, taking care to hide all the seam



This seam will hold your fleece in place,
-Cut the excess all around



Put your first piece of lower-quality felt on your fleece



This seam will hold your felt in place



Embroidery stitches



This stitch tells you the location of your felt for the hat



Put your felt on the seam



This seam will hold your felt in place
-Cut excess felt all around



Embroidery stitches on the hat



This seam tells you the location of your face felt



Put your felt on the seam



This seam will hold your felt in place



Cut excess felt all the way around



Make the embroidery stitches



This stitching tells you the location of your felt for the brim of the hat



Put your felt on this seam. Take a good quality felt because it will be visible



This seam will hold your felt in place



Cut excess felt all the way around



Make the embroidery stitches



This seam tells you the location of your felt for the nose



Put your felt on the seam



This seam will hold your felt in place



Cut off excess all around



Make the embroidery stitches



Before making the last seam, put your 2nd piece of white felt on the back of your frame, keep in place



Make the last seam that will join your 2 felt together, you should have this on the back of your frame

SWEETS



The first seam is done on your support to indicate the location of your fleece



Put on your fleece, taking care to hide all the seam



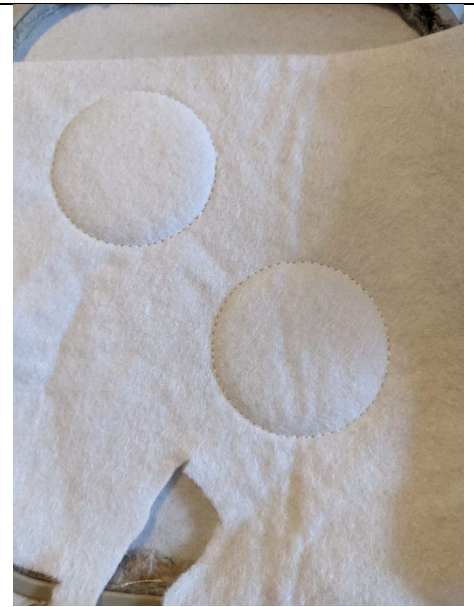
This seam will hold your fleece in place



Cut off excess all around



Put your good quality felt piece, white, on your fleece



This seam will hold your felt in place



Make the embroidery stitches

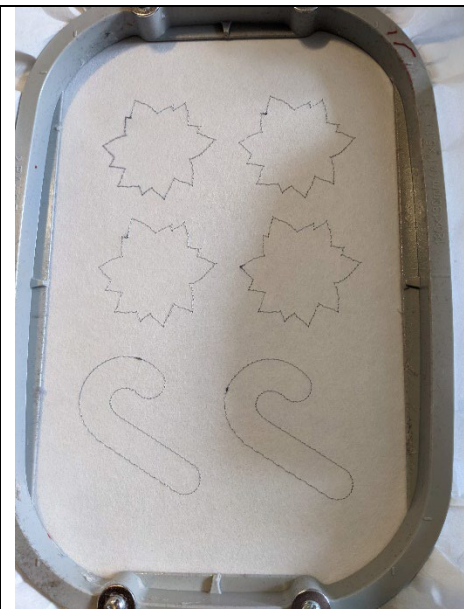


Before making the last seam, put your 2nd piece of white felt on the back of your frame, keep in place



Make the last seam that will join your 2 felt together, you should have this on the back of your frame

Poinsettias and candy canes (for the 16x26 they are made separately)



The first seam is done on your support to indicate the location of your fleece



Put on your fleece, taking care to hide all the seam



This seam will hold your fleece in place



Cut off excess all around



Put your first piece of lower-quality felt on your fleece



This seam will hold your felt in place



Put your felt on the seam



This seam will hold your felt in place



Cut off excess all around



Make the embroidery stitches



Put your felt on the seam



This seam will hold your felt in place



Cut off excess all around



Make the embroidery stitches



Put your felt on the seam of candy canes



This seam will hold your felt in place



Cut off excess all around



Make the embroidery stitches



Put your felt on the seam



This seam will hold your felt in place



Cut off excess all around



Make the embroidery stitches



Before making the last seam, put your 2nd piece of white felt on the back of your frame, keep in place



Make the last seam that will join your 2 felt together, you should have this on the back of your frame

SANTA CLAUS



The first seam is done on your support to indicate the location of your fleece



Put on your fleece, taking care to hide all the seam

This seam will hold your fleece in place



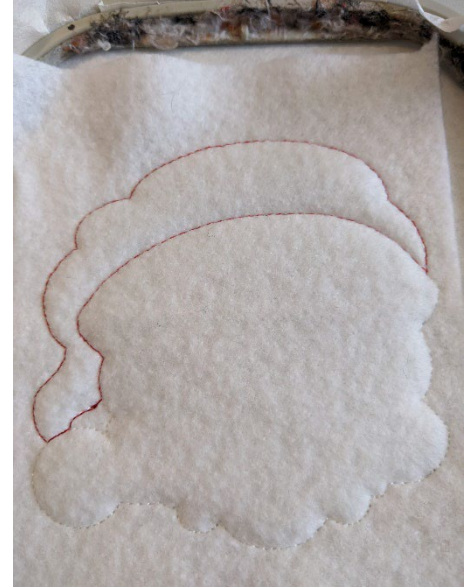
Cut off excess all around



Put your first piece of lower-quality felt on your fleece



This seam will hold your felt in place



This seam tells you the location of your felt



Put your felt on the seam



This seam will hold your felt in place



Cut off excess all around



Make the embroidery stitches



This seam tells you the location of your felt



Put your felt on the seam



This seam will hold your felt in place



Cut off excess all around



Make the embroidery stitches



This stitching tells you the location of the felt for the brim of the hat



Put your felt on the seam



This seam will hold your felt in place



Cut off the excess all the way around the brim of the hat



Put your felt on the part of the tassel

This seam will hold your felt in place



Cut off excess all around



This seam tells you the location of your felt



Put your felt on the seam



This seam will hold your felt in place



Cut off excess all around



Make the embroidery stitches



This seam tells you the location for whiskers



Put your felt on the seam



This seam will hold your felt in place



Cut off excess all around



Make the embroidery stitches



Put your felt on the seam



This seam will hold your felt in place

Cut off excess all around



Make the embroidery stitches



Before making the last seam, put your 2nd piece of white felt on the back of your frame, keep in place

Make the last seam that will bring the 2 felt together.

Cut off excess all around

Make all the elements before assembling

Assembly:

You can print the assembly sheets if you wish.

For assembly, start by gluing your 2 crown pieces together



Here I put a ribbon on the joint of the 2 parts of the crown.

You can have fun arranging the elements according to your creativity.

Each element is glued to hot glue.



You can sell items made with these embroideries but you can NOT share, copy, exchange or resell this file in part or in whole in any format.

Reselling this digital design is against the law.