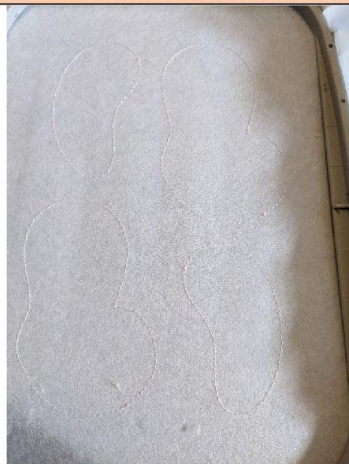


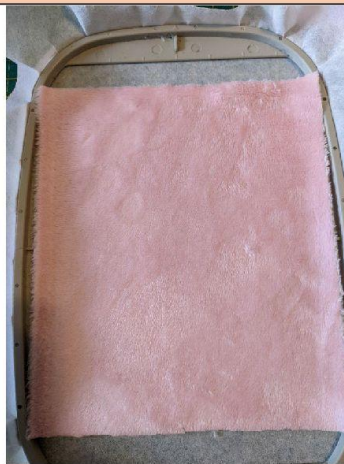


DINOSAUR

PAWS



Sewing 1: this seam is done on your non-woven support to be cut



Put your Minky to hide the seam completely



Put your 2nd piece, place against place on top of your first Minky piece



Sewing 2: this seam will join your 2 pieces of Minky together



Get out of your frame, cut the excess fabric all around leaving a little more fabric at the openings

THE TIPS



Seam 1: this seam is done on your non-woven support to tear to indicate the location of your fabric



Put your 2 pieces place against place on the seam.

Here I made the tips one by one to be able to make different colors



Sewing 2: this seam will join your 2 pieces together



Cut the excess on the side so you can do the rest



Seam 3: this seam tells you the location of your fabric for the 2nd point



Put your 2 pieces on your seam



Sewing 4: this seam will join your 2 pieces together



Cut the excess on the side so you can do the rest



Seam 5: this seam tells you the location of your fabric for the 3rd spike



Put your 2 pieces of fabric place against place on the seam



Continue this way to the end, taking care to cut the excess on the sides and bottom if necessary



Get out of the frame, cut the excess and set aside

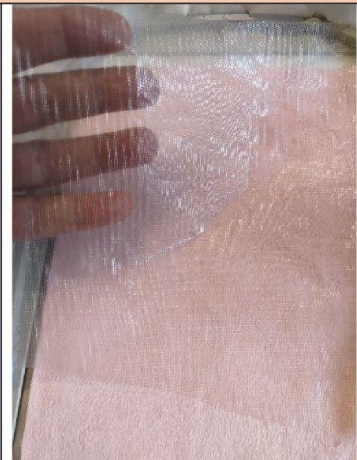
THE FIRST SIDE



Seam 1: this seam tells you the location for your Minky, take care that the Minky hides the entire seam



Put your Minky on the seam



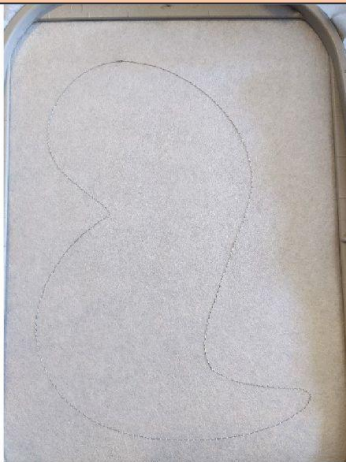
Put your water-soluble support at the top (for the face)



Getting out of the frame and putting aside

2-3-4-5-6 stitching:
embroidery stitches

THE^{2ND} SIDE



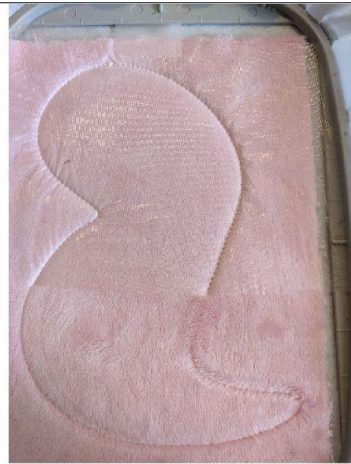
Seam 1: this seam is done on your non-woven support to tear



Put your Minky on the seam



Put your water-soluble support in the top for the face



Seam 2: this seam will hold your Minky and water-soluble support in place



Stitching 3-4-5-6-7: embroidery stitches



Seam 8: this seam is done along the body to indicate the location of the tips



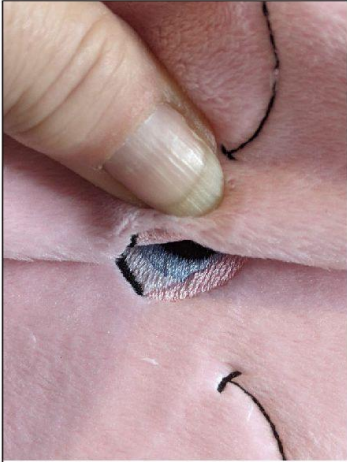
Put the tips on, taking care to hide the seam well. Put su tape to hold in place and put it in the location of the seam so that your foot does not get caught in the tips



Seam 9: this seam will hold your tips in place



Remove the tape and your water-soluble support



Take your^{1st} piece of body and align eyes and mouth together



Align the mouth



Here I put 2 pins to keep in place



Sewing 10: this seam will join your 2 pieces together



Get out of the frame and cut the excess fabric, leave a little more at the opening



Put in place



Put the stuffing in your body. It is very important to fill it well with stuffing



You will have this opening at the bottom



With your needle and waxed thread. Close opening



Print the plan for the cardboard (Don't forget to do it 100%)



I take cardboard cereal box and I put double



Insert the carton through the opening



Come and put the cardboard in the bottom of the foot



Put the stuffing and close the opening with an invisible seam. The cardboard stays in place with the stuffing



Put the paws on the body, you can pin before putting the buttons



Doing the same way



Put the buttons to keep the legs and arms in place

If you resize or modify this design in any way, I cannot guarantee a quality point.