

DOLLY ELYE FRAME 13X18CM (5"X7")

MATERIALS

For the doll, I took cotton wadding, for the hair of the minky and for the clothing of the cotton

Duvet: 2 pieces 11x6.5cm high, 10x10cm frame

Face: 1 piece 15x15cm high, 13x18cm frame

Front hair: 1 piece 15x10cm high

Back hair: 1 piece 15x15cm

Body: 2 pieces 13x20cm, 13x18cm frame

Arms: 2 pieces 11x11cm, 10x10cm frame

Top of the dress: 1 piece of 20x7.5cm high and 1 piece of 20x10cm high, 13x18cm frame

Bottom of the dress:

1 piece of 36x10cm high

Coat: 2 pieces of 23x18cm

high, 16x26cm frame or at the sewing machine with the

supplied pattern

Shoe: 2 pieces 10x10cm high, 10x10cm frame



Panties: 2 pieces, 18x10cm high, made with a sewing machine

Tearable support, water-soluble support, tapestry thread (for assembly), filler, temporary glue

DUVETS, (10x10cm frame)



Seam #1: Seam that is being done on your frame to tell you the location of your tissue



Put your glue temporary on your support and put in your first piece of quilt fabric



Sewing 2: this fact on your fabric for the keep in place



Put your 2nd piece of cloth, place against place

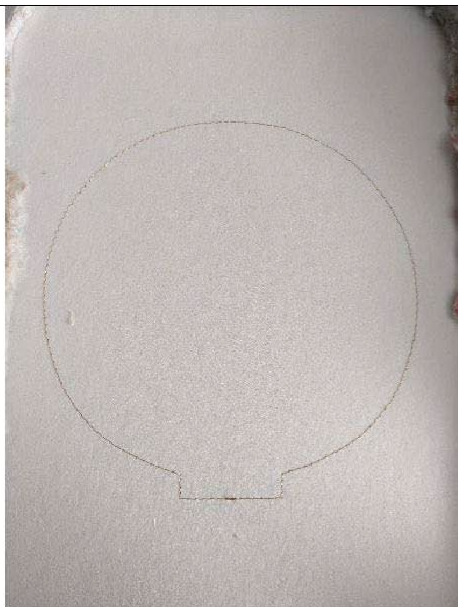


Sewing 3: this seam will join your 3 piece of fabric together



Step out of frame and hatch the excess of fabric leaving a little more fabric towards the top opening of the duvet to make hand-stitching

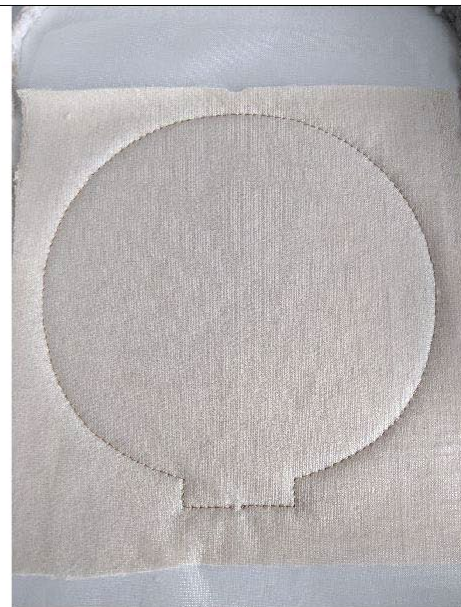
THE HEAD, (13x18cm frame)



Put your teachable support in your frame, sew #1: sew on your frame to indicate the location of your fabric



Put your temporary glue on your support and put in your first piece of fabric for the head as well as your water soluble support



Seam 2: This seam will keep your fabric and water-soluble support on your base support



Sewing from 3 to 9: embroidery stitches for the face



Seam 10: this seam tells you the location of your "front hair" fabric



Put your fabric on the seam 10 taking care to hide all the seam



Seam 11: This seam will hold your fabric on the head, once finished, remove excess fabric from the bottom part



Seam 12: This seam tells you where your first duvet is located



Put your first duvet on the seam, place against place, keep in place.

Seam 13: This seam will keep your duvet in place



Sewing 14 and 15: as for 12 and 13 but for the other ear



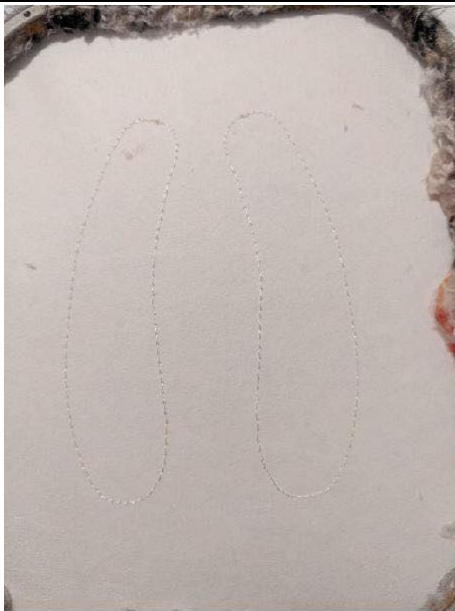
Once your ears are in place, take your piece of fabric "back fabric", place it place against place on your work



Sewing 16: this sewing will join your 2 pieces of fabric together.

Get out of frame, cut excess fabric and put in place

THE ARMS (10x10cm frame), The body is made exactly the same, (13x18cm frame)



Put your support tearable in your frame, do the sewing #1: Sewing done on your frame to indicate to you the location of your tissu



Put your glue temporary on your support and put in your first piece of arm cloth

Seam 2: this seam will maintain your fabric on your basic support



Put your 2nd piece of fabric for the arm, place against place



Sewing 3: this seam will join the 2 pieces of fabric ensemble.

Out of frame, cut the excess of fabric leaving a little more to opening.

Do the body exactly from the ARM.

SHOES, (10x10cm frame)



Stitch #1: This fact on your support for you indicate the location of your fabric



Take your first piece of fabric, fold this fabric in two and put the part bend on the line at the top



Seam 2: this seam will maintain your fabric on the support



Remove the fabric to the inside of the shoe



Put your 2nd piece of fabric, fold in half on your first coin of cloth taking care to put equal in the top



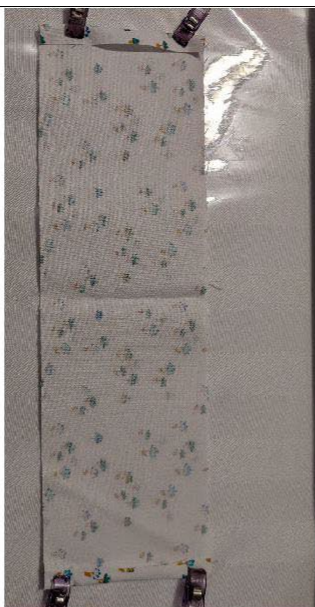
Sewing 3: this seam will join the 2 pieces of fabric together.

Get out of frame, remove the excess tissue.

THE DRESS, (13x18cm frame)



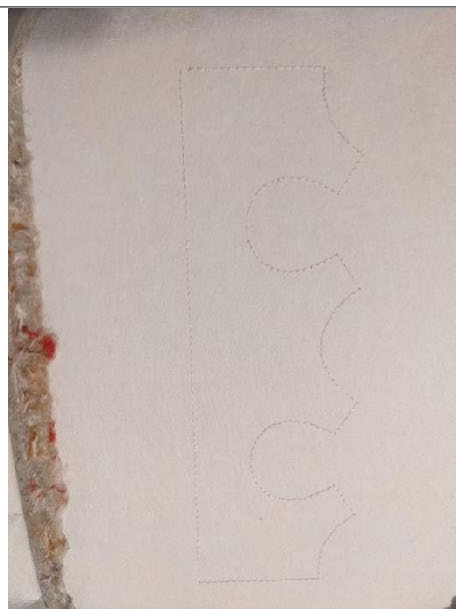
Cut the bottom piece de la robe (36x10cm)



Make a flap each extrémité du 36cm,



Festoon the part of the top of the bottom part of la robe



Sewing 1: this seam tells you the location of your fabric for the top of the robe



Put your fabric on the seam.

Seam 2: this seam will maintain your fabric on your support



Take the bottom part of the dress and put it on place against place on the bottom line of the top of the dress, well keep in place in taking care to put in the interior of the seams on either side.



Seam 3: This seam will keep the bottom part of the dress on the top part



Once your sewing 3 is complete, put the bottom part of the dress on the right side



Take your 2nd piece from the top part of the dress and put place against place on your 1st piece from the top of the dress, keep it in place



Seam #4: this seam will join your pieces from the top part of the dress together



Get out of the frame, cut the excess fabric with a notching scissors at the top of the dress



Go back to the place



Sew the back piece of the top of the dress on the seam between the bottom and top of the dress, on the back



Make an invisible seam on the shoulders to join the front with the back



shoulder seam.

All you have to do now is to make the little rabbat on the bottom of the dress

THE MANTLE, (16x26cm frame),

Here I made with the sewing machine, for those who will do it with the embroidery machine, here are the 3 steps

1- Sewing 1: This is done on your support to indicate the location of your fabric

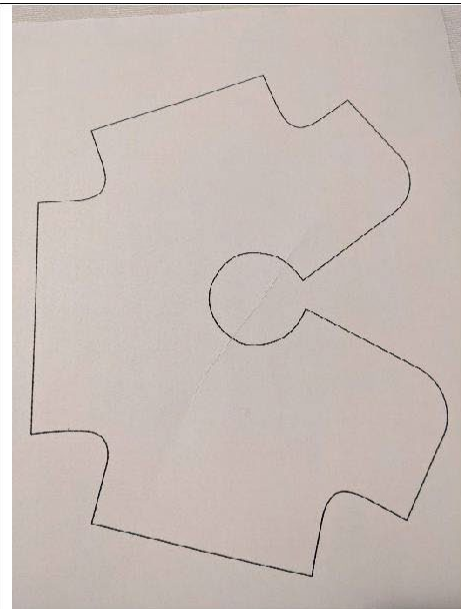
2 – Seam 2: This seam will hold your fabric on your support

Put your 2nd piece of fabric place against place on your first piece of fabric (the one in the frame)

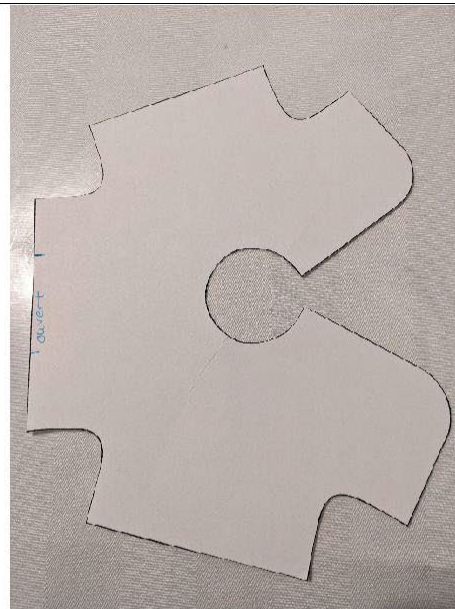
3- Coutre 3: this seam will join your 2 pieces together.

Step out of the frame and cut the excess fabric. For the finish see below

TO THE SEWING MACHINE



Print out your boss.



Cut the boss



Transfer to the back of your fabric. Remember, you need 2 pieces of fabric



Make a seam on the tracing lines all the way except the opening part, which is used to turn your piece to the right



À from the opening, put your little coat right on



Do a little sewing all the way around.

J'ai mis ma machine à 6.5mm and my point to 2.5mm



Place up against place and do the seam on the side of your manteau.

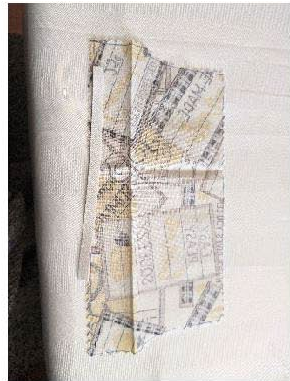
THE PANTIES, this done to the sewing machine

Here I show you another color but it is exactly the same way

Print the pattern of the trousers, measure the small square well to be sure that your pattern is well to scale, cut the pattern



1- Trace your boss on your fabric, that takes 2 pieces, cut on the line of tracing, I cutting with a chisel dentelé



2- Put on your lace or elastic on each jambe (étape 1)

Here I put a rubber band but on the doll Élye I put a lace



Make a ledge not to see the elastic

Don't do if you put a lace



Join your 2 rooms, place against the place and do the side seam A



Once the seam completed, open your piece of pantalon



Put the elastic in the top of the trousers SIDE B and do the small edge not to see the elastic



hand over your two parts place against the place and do the side seam C



it only remains to sew du califourchon, (E and D) location against the place make small seam



Your pants are finished



THE ASSEMBLY



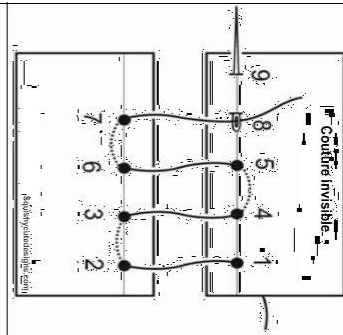
Put the fill in the body, arms and head.

To have a beautiful doll, the most important is this step, if you do not put enough stuff, your doll will look poorly made so you really have to put a lot



Once your fill is in place, close the opening of your arms and body.

For arms, make an invisible seam



Little trick, to fill the little duvets, I Get an eyelash clip



Position your head on your body, with your tapestry yarn, make an invisible seam all round. Personally I pass 3 times for it to be strong and safe



Put your doll in front of you. Take the right arm in front of you. Prick from the back of the arm to the front (with the unavoidable arm)



Swipe your edge needle to the edge of your body by pricking your needle on the front of your stitch to the side of your body



Take your left arm, prick from front to back of your arm (inside)



Return to the edge of your body. Prick on the back of your side of the body seam



Join your yarns, tie a knot and cut off the excess yarn.

I iron it 2-3 times to make it strong and safe.