



## WALL DECORATION BOO!

### Materials

5 pieces of 11x17cm of basic felt for the back of the rooms

5 pieces of fleece of 11x17cm

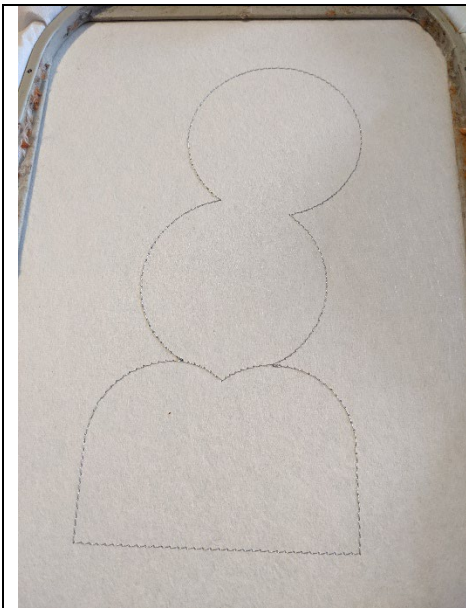
1 sheet of good quality white felt 20x30cm high

For the BOO I used leftover cotton, about 8x8cm for the o and 7x10cm high for the B

The buckle: 1 piece of 17x10cm of cotton for the top of the buckle

Bottom of the buckle: 1 piece of 17x11cm high cotton

Cord or ribbon, rifle to glue



The first seam is done on your support to tell you the location of your fleece



Put your fleece on the seam, taking care to hide the entire seam



Sewing your fleece onto your support



Cut off excess fleece all around



Put your base felt on the fleece, taking care to hide the entire fleece



Sewing your felt on the support



Seam that tells you the location of your fabric



Put your fabric on the seam



Sewing your fabric on your felt





Remove the excess all the way around



Seam that tells you the location of your fabric



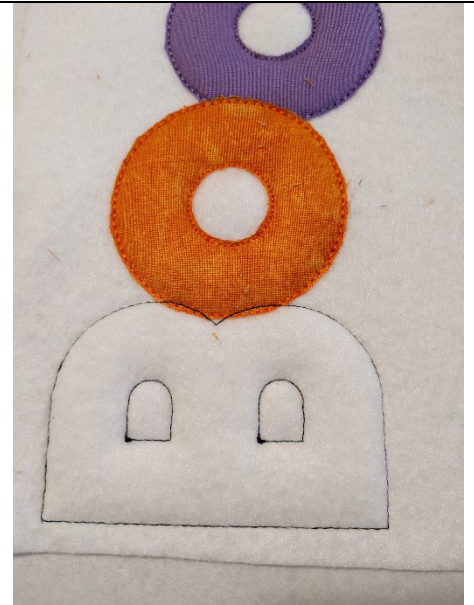
Put your fabric on the seam



Sewing your fabric on your felt



Remove the excess all the way around



Seam that tells you the location of your fabric





Put your fabric on the seam



Sewing your fabric on your felt



Remove the excess all the way around



Make the bumblebee points



Put your basic felt piece on the back of your frame, taking care to hide the seams well

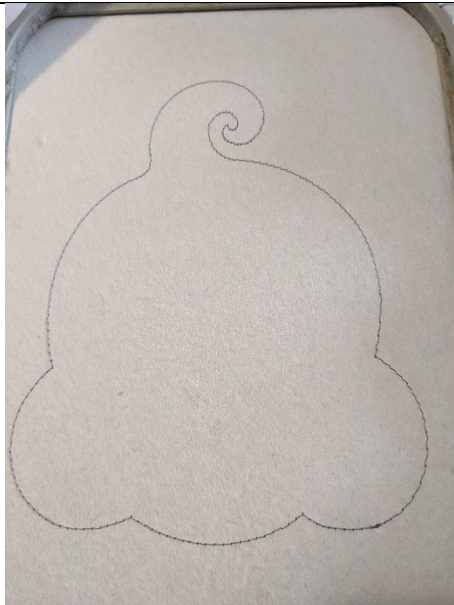


Sewing your 2 pieces of felt together



Get out of your frame, cut the excess all the way.

You should have this on the back of your frame



The first seam is done on your support to tell you the location of your fleece



Put your fleece on the seam, taking care to hide the entire seam



Sewing your fleece onto your support





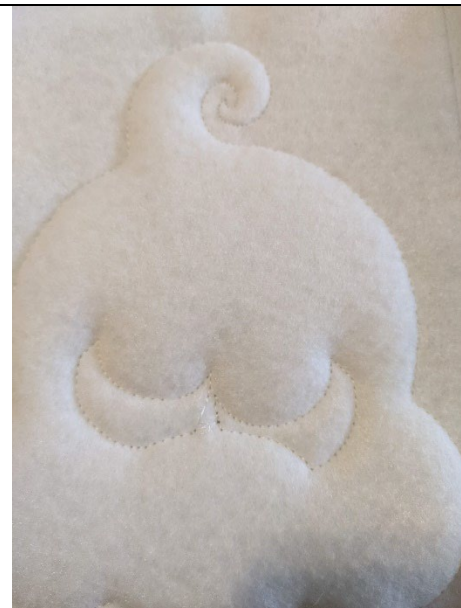
Cut off excess fleece all around



Put your **quality felt** on the fleece, taking care to hide all the fleece well



Sewing your felt on the support



Seam that tells you the location of your fabric



Put 1 piece of premium felt on your seam



This seam will sew your fabric on your felt



Remove the excess all the way around



Seam that tells you the location of your fabric



Put your fabric on your seam



This seam will sew your fabric on your felt



Remove the excess all the way around



Seam that tells you the location of your fabric





Put your fabric on your seam



This seam will sew your fabric on your felt



Remove the excess all the way around



Make the bumblebee points



Put your basic felt piece on the back of your frame, taking care to hide the seams well



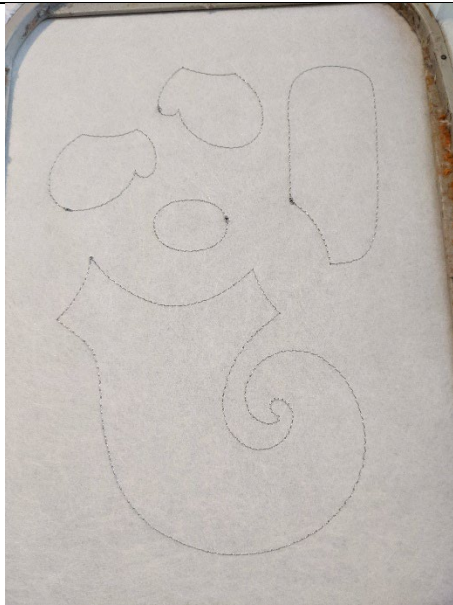
Sewing your 2 pieces of felt together





Get out of your frame, cut the excess all the way.

You should have this on the back of your frame



The first seam is done on your support to tell you the location of your fleece



Put your fleece on the seam, taking care to hide the entire seam



Sewing your fleece onto your support



Cut off excess fleece all around



Put your base felt on the fleece, taking care to hide the entire fleece



Sewing your felt on the support



Put your fabric on your seam of the white part



This seam will sew your fabric on your felt



Remove the excess all the way around





Put your fabric on your seam of the green part



This seam will sew your fabric on your felt



Remove the excess all the way around



Make the bumblebee points



Put your basic felt piece on the back of your frame, taking care to hide the seams well

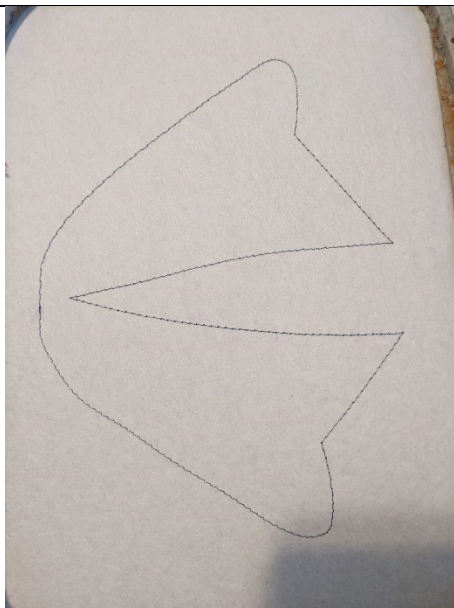


Sewing your 2 pieces of felt together



Get out of your frame, cut the excess all the way.

You should have this on the back of your frame



The first seam is done on your support to tell you the location of your fleece



Put your fleece on the seam, taking care to hide the entire seam



Sewing your fleece onto your support





Cut off excess fleece all around



Put your base felt on the fleece, taking care to hide the entire fleece



Sewing your felt on the support



Put your piece of fabric



This seam will sew your fabric on your felt



Remove the excess all the way around

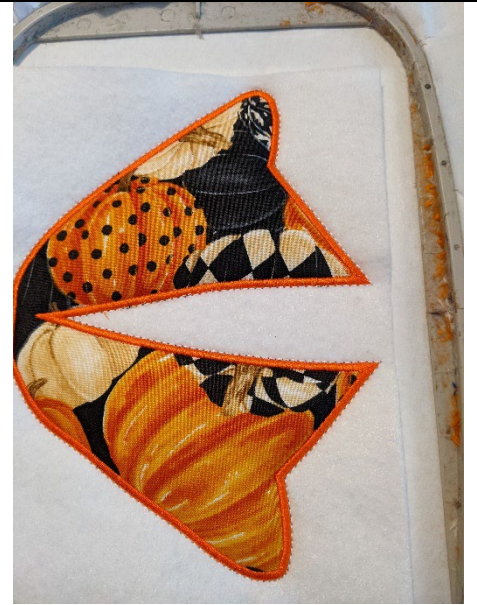




Make the bumblebee points



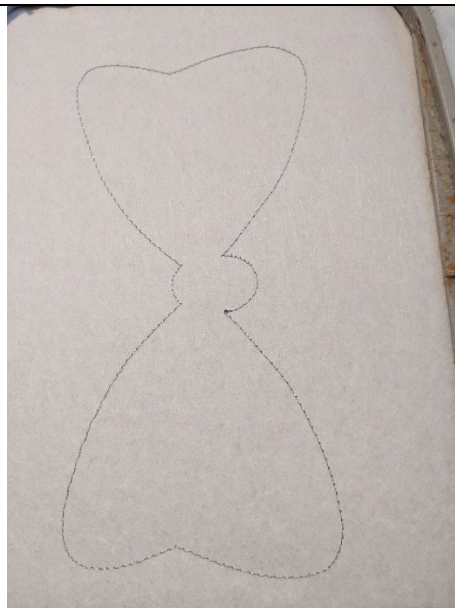
Put your basic felt piece on the back of your frame, taking care to hide the seams well



Sewing your 2 pieces of felt together



You should have this on the back of your frame



The first seam is done on your support to tell you the location of your fleece



Put your fleece on the seam, taking care to hide the entire seam





Sewing your fleece onto your support



Cut off excess fleece all around



Put your base felt on the fleece, taking care to hide the entire fleece



Sewing your felt on your support

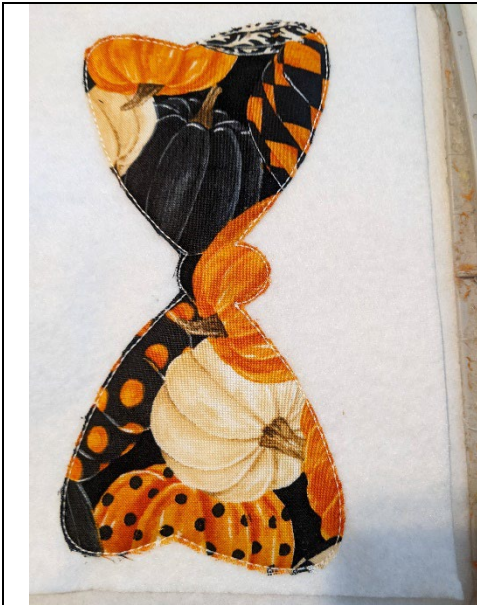


Put your piece of fabric

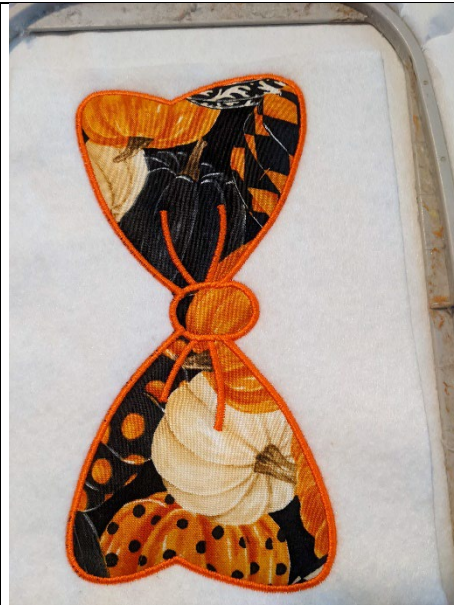


this seam will sew your fabric on your felt





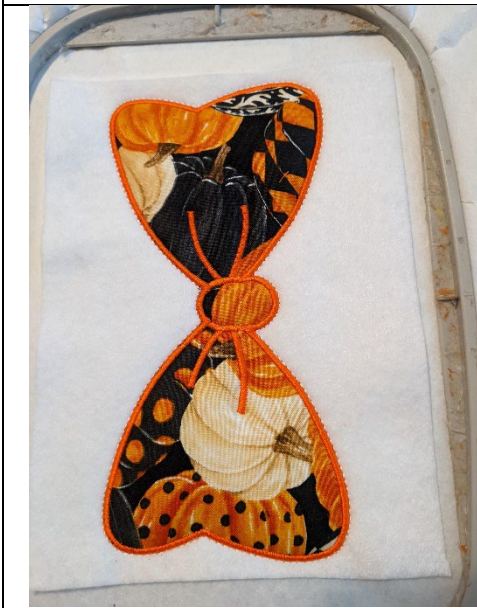
Remove the excess all the way around



Make the bumblebee points



Put your basic felt piece on the back of your frame, taking care to hide the seams well



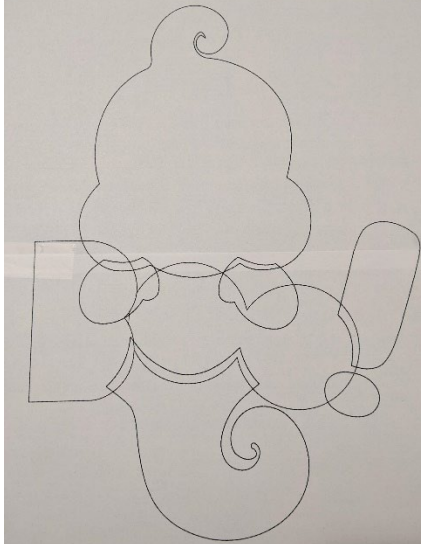
Sewing your 2 pieces of felt together



You should have this on the back of your frame

Get out of your frame, cut the excess all the way.





Print your mounting pattern



You should have all these parts before doing the assembly



Put your hands on the mounting plan, stick your head on your hands, put aside



Take the lower body and position it on the mounting plane, stick the Boo on the lower body



Paste your exclamation mark



Take the head with your hands and come and stick it on the Boo

Do the same process for the loop



You can take ribbon I took rope that I stuck on the back of the ghost and on the back of the loop

If you resize or modify this design in any way, I can't guarantee a quality point.

©Copyright 2022 by Broderie D'Zhiboux. You can sell the items made with these embroideries but you can NOT share, copy, exchange or vendre this file in part or in whole in any format. The resale of this digital design is against the law.