

BRODERIE DZHIBOUX

Numérisatrice
fichiers broderie

MOTHER AND SANTA CLAUS MITTEN

Frame 13x18cm (5x7")

Finished size: 29cm high x 15cm
wide

Materials:

5 pieces of fleece of 13x18cm

5 pieces of white felt for the
back

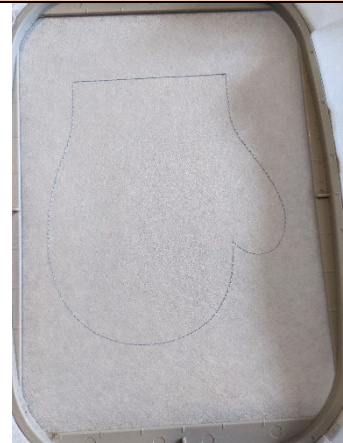
2 pieces of 3.8cm wide x 22cm
of imitation fur felt lanyard, 4
small pieces for the edge of the

sleeves

1 piece of felt in each colour of 24x30cm

Tear stabilizer, 1 pom-pom, hot glue gun

THE MITAINE



Seam 1: This seam
is done on your
stabilizer to tell
you the location
of your fleece



Putting your
fleece on the
seam



Seam 2: This seam
will keep your
fleece in place



Trim off the
excess fleece



Put your coloured felt on the fleece



Seam 3: This seam will hold your felt in place



Trim off the excess all the way around

Seam 4:
embroidery stitch
(here I forgot to take the picture)



Print your pdf of the mitten and buckle



Trace and cut the mitt out of rigid cardboard



Glue the cardboard to the back of your work (back of the frame), center in the mitt



Put your felt on top of the cardboard (you can also do it with the white felt on the back)



Seam 5: This seam will join your front felt with the back felt



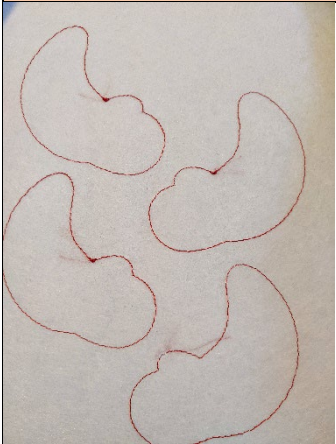
Trim off the excess



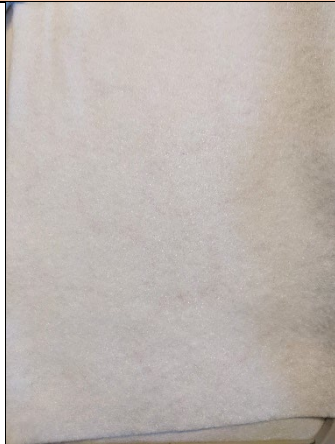
Seam 6:
Bumblebee
stitches

Exit the frame,
remove your
stabilizer and set
aside until
mounting

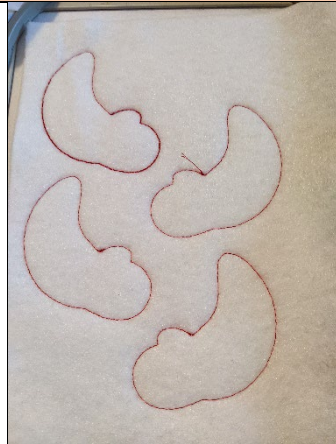
THE ARMS OF MOTHER AND SANTA CLAUS



Seam 1: This seam
is done on your
stabilizer to tell
you the location
of your fleece



Putting your
fleece on the
seam



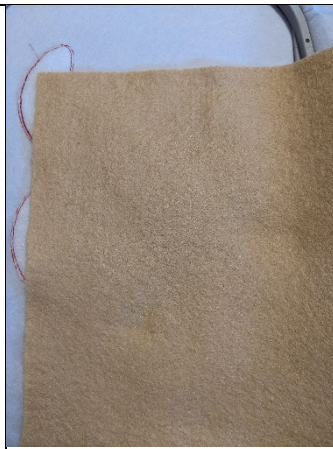
Seam 2: This seam
will keep your
fleece in place



Trim off the
excess fleece



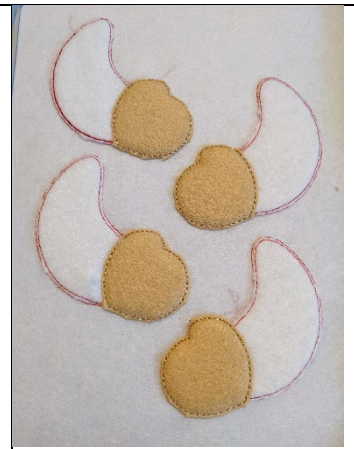
Seam 3: This seam shows you the location of your skin-colored felt



Put your felt on the seams



Seam 4: This seam will hold your felt in place



Trim off the excess felt all the way around



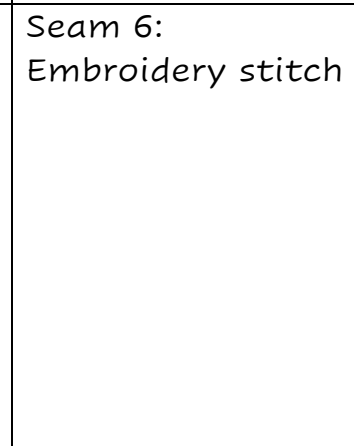
Put your red felt on the seams



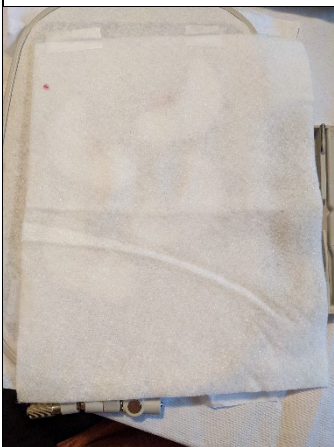
Seam 5: This seam will hold your felt in place



Trim off the excess felt all the way around



Seam 6: Embroidery stitch



Put your white felt piece on the back of your work



Seam 7: Seam to join the front and back of your work

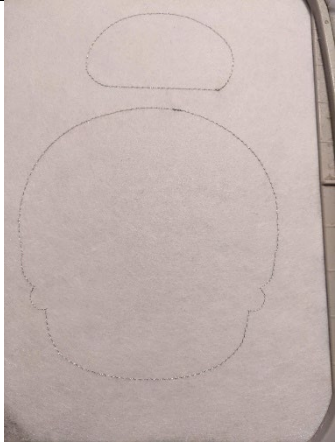


Trim off the excess all the way around



Seam 7 & 8: Drone stitches

MRS. CLAUS' HEAD



Seam 1: This seam is done on your stabilizer to tell you the location of your fleece



Putting your fleece on the seam

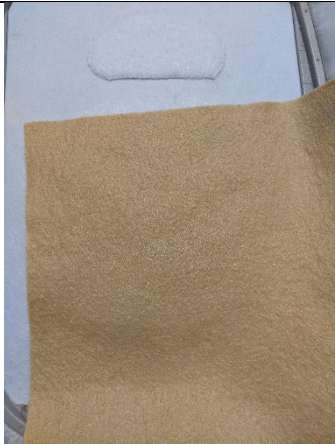


Seam 2: This seam will keep your fleece in place



Trim off the excess fleece

Seam 3: This seam shows you the location of your face felt



Put your felt on the seam



Seam 4: This seam will hold your felt in place



Trim off the excess all the way around



Seam 5-6: Embroidery stitch



Seam 7 & 9: This seam shows you the location for your felt earrings



Put your felt on the seam



Seam 8 & 10: This seam will keep your felt in place



Trim off the excess all the way around



Put on your white felt to cover the hair



Seam 11: This seam will keep your felt in place



Trim off the excess all the way around



Sewing 12-13: Embroidery stitch



Put your piece of felt on the back of your work (back of the frame)



Seam 14: This seam will join your front with the back of your work



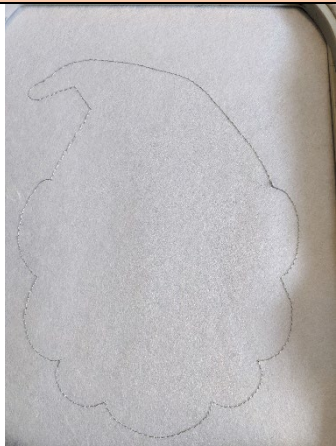
Trim off the excess all the way around



Sewing 15-16-17-18: Embroidery stitches

			Pop out of your frame and set aside until mounting
--	--	--	----------------------------------------------------

SANTA'S HEAD



Seam 1: This seam is done on your stabilizer to tell you the location of your fleece



Putting your fleece on the seam



Seam 2: This seam will keep your fleece in place



Trim off the excess fleece



Seam 3: This seam shows you the location for your hat



Put your felt on the seam



Seam 4: This seam will hold your felt in place



Trim off the excess all the way around



Seam 6: This seam shows you the location for your fabric of the hat brim (fur felt)



Putting Your Fabric on the Seam



Seam 6: This seam will hold your fabric in place

Trim off the excess all the way around



Seam 7: Embroidery stitches



Seam 8: This seam shows you the location for your face felt



Put your felt on the seam



Seam 9: This seam will hold your felt in place



Trim off the excess all the way around



Seam 10: Embroidery stitch



Seam 11: This seam shows you the location of your beard felt



Put your felt on the seam



Seam 12: This seam will hold your felt in place



Trim off the excess all the way around



Seam 13: This seam shows you the location for your first eyebrow



Put your felt on the seam



Seam 14: This seam will hold your felt in place



Trim off the excess all the way around



Seam 15: This seam shows you the location of your second eyebrow



Put your felt on the seam



Seam 16: This seam will hold your felt in place

Trim off the excess all the way around



Put your felt on the mustache part



Seam 17: This seam will keep your felt in place



Trim off the excess all the way around



Sewing 18-19-20: Embroidery Stitch



Put your piece of felt on the back of your work (back of the frame)



Seam 21: This seam will join the front and back of your work together



Trim off the excess all the way around



Sewing 22-23: Embroidery stitch

Here I show you how to do the assembly but with the gingerbread



Glue the head to the top of the mitt



Glue the fur-style felt all the way around the mitt



Glue on the back



Glue the arms together



For the loop, you with the pattern when you print the pattern of the mitten cardboard



With a small dot of glue, glue the top of the mouth to the center of the mouth



Glue the other part towards the center



With the small part of the bottom, go around and glue on the back

If you resize or modify this design in any way, I can't guarantee a quality point.

©Copyright 2023 by Broderie D'Zhiboux.

You may sell items made with these embroideries but you may NOT share, copy, trade, or resell this file in whole or in part in any format.