



S H Designs

sheryl@sherscreativespace.com

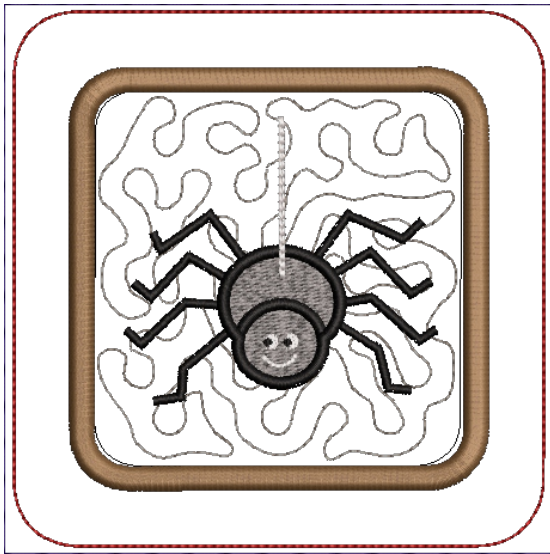
Spider & Ghost Coasters

These coasters are done completely in the hoop. You will close the back using fusible seam tape.

5 X 7 HOOP	4 X 4 HOOP
<p>DESIGN INFO FOR SPIDER Stitches: 8508 Height: 4.80 in Width: 4.80 in Colors: 7 Stops: 10</p> <p>FINISHED PROJECT SIZE: 4 1/2 X 4 1/2 inches</p>	<p>DESIGN INFO FOR SPIDER Stitches: 6656 Height: 3.80 in Width: 3.80 in Colors: 7 Stops: 10</p> <p>FINISHED PROJECT SIZE: 3 1/2 X 3 1/2 inches</p>
<p>DESIGN INFO FOR GHOST Stitches: 11,081 Height: 4.80 in Width: 4.80 in Colors: 9 Stops: 11</p> <p>FINISHED PROJECT SIZE: 4 1/2 X 4 1/2 inches</p>	<p>DESIGN INFO FOR GHOST Stitches: 7960 Height: 3.80 in Width: 3.80 in Colors: 9 Stops: 11</p> <p>FINISHED PROJECT SIZE: 3 1/2 X 3 1/2 inches</p>

Thank you for your purchase, and feel free to email me with any questions or comments. I also love to see pictures of the finished projects! sheryl@sherscreativespace.com

If you change the size or density of the original design, you could alter the final result.



SUPER IMPORTANT:

You will not remove the project from the hoop until you are completely finished with the stitching.

You will remove the hoop from the machine several times, but the fabric and stabilizer remain in the hoop.



PLEASE READ THESE IMPORTANT NOTES FIRST

- Jump stitches can be trimmed whenever you want. I like to trim them during stitching breaks, especially if they will be in the way of future stitching.
- Your placement stitches can be any color because they won't show. The thread for your final stitching should match the main fabric.
- If using tape, place it so you won't be stitching through it. It can gum up your needle and break the thread.
- All my coasters are made the same way, so the design on these images may not match your design, but the steps are exactly the same. Don't worry because I give you step by step instructions for the design you have chosen.
- I use fusible seam tape so that no stitching is needed. You can stitch if you prefer, or leave the bottom unfinished since it won't show anyway.

Supplies for each coaster:

- 6 x 6 inch fabric (main fabric)
- 4 1/2 x 4 1/2 inch fabric (center fabric)
- 6 x 8 inch fabric, 2 of them (backing)
- 6 x 6 inch piece of cotton batting
- Cutaway stabilizer
- Basting spray (much safer than pins)
- 4 inch piece of 1/2 inch wide fusible seam tape
- 6 x 6 inch piece of tearaway stabilizer or tissue paper
- Size 11 embroidery needle
- Embroidery thread
- General sewing and embroidery supplies

Small fabric scraps for appliques only if your coaster contains applique.

Note about batting:

100% cotton batting was used in the sample, but you could substitute a light color of felt, or sew-in fleece.

Note about stabilizers:

Use whatever you are comfortable with. I like the Sulky Cut Away.

As for the tear away stabilizer or tissue paper:

This will prevent the presser foot from getting caught on the folded fabric when stitching the back on (final stitching).

Instructions for making the coasters:

STEP 1:

- Hoop the cutaway stabilizer.
- Take the hoop to the machine and stitch out the first step, which is the placement stitches for your coaster. Remove hoop from machine.



STEP 2:

- Place the 6 x 6 inch piece of cotton batting over the placement stitches.
- Place the 6 x 6 inch piece of fabric over the cotton batting.
- I find that I get the best results when using spray adhesive (designed for embroidery) for this step. If you prefer to use pins, cut your fabric and batting bigger so that your pins will be far away from the stitching line.



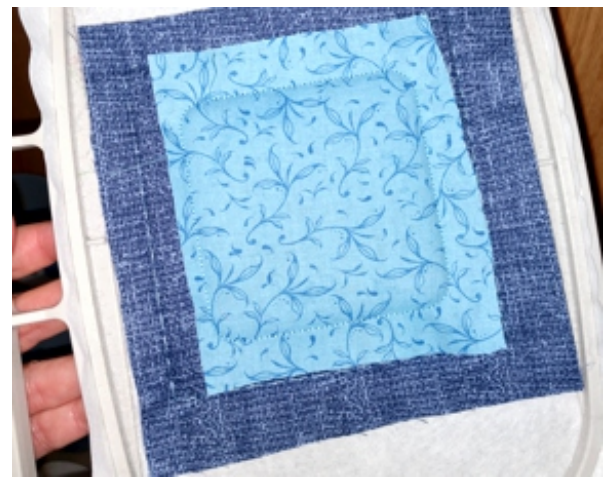
STEP 3:

- Return the hoop to the machine and stitch the next step. This is simply a basting stitch that will keep the fabric and cotton batting secure. You can remove it later if it shows once the coasters have been turned right side out.



STEP 4:

- The next couple stitchings will be just like any applique project you would do. Immediately after your basting stitch, you will stitch the placement stitch for your center fabric. Then place the fabric over the placement stitch and stitch in place (your tackdown stitch). Be sure to leave a margin around the stitching line.

**STEP 5:**

- Remove hoop from machine and cut the excess fabric away from the stitching line. Cut as close to the stitching line as you can. Return hoop to the machine, and your next step is to stitch the stippling. This will give your decorative stitching a nice foundation to stitch on.

**STEP 6:**

- Now the fun starts! Begin your decorative stitching. The first stitch will be your satin stitch around the square, followed by the decorative stitching. Stop when you get to the last stitching step. Remove hoop from the machine and place on your work table.

**STEP 7:**

- Fold your 6 x 8 inch pieces of fabric in half and iron. Right sides will be facing out, and you will meet the short ends together. Place the folded fabrics over the design with the folds toward the center. Overlap one of the halves. This will leave a nice opening to turn right side out, and the overlap will be needed for final closing. Secure with tape at the top and the bottom.



STEP 8:

- Place your tissue paper or tearaway stabilizer over the halves and stitch your final stitching.
- The tissue paper or tearaway stabilizer is very important because this will prevent your needle from getting caught up with the folded fabrics. I tried without, and this was the best way to prevent that from happening.

**STEP 9:**

- Tear away the stabilizer or tissue paper, then remove project from hoop. Cut all the way around the coaster about 1/8 to 1/4 inch away from the stitching. Turn right side out through the opening. Push out corners and iron.
- Place your piece of fusible seam tape inside the overlap and iron in place.



For more fun embroidery designs and patterns visit:
[In the Hoop by Sher](#)

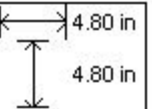
For fun PDF sewing and quilting patterns visit:
[Sher's Creative Space](#)

SPIDER COASTER

Color Sequence
5x7SpiderGhostCO2

Hatch Embroidery Software

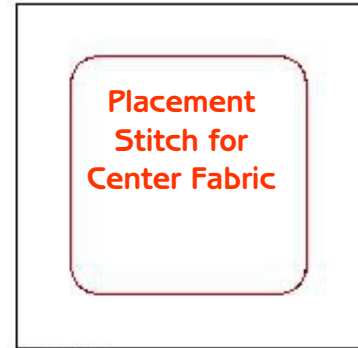
Stitches: 8508
 Colors: 7
 Zoom: 0.39




Stop #: 1
 Code: 225
 Name: Poinsettia
 Chart: Hatch
 Stitches: 246
 Thread used: 3.70ft



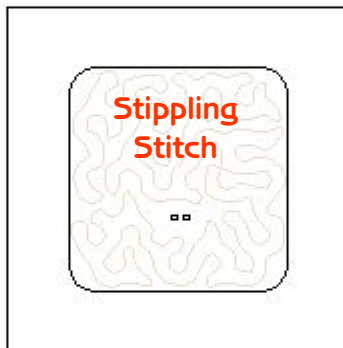
Stop #: 2
 Code: 218
 Name: Blue - Imperial
 Chart: Hatch
 Stitches: 71
 Thread used: 2.67ft



Stop #: 3
 Code: 225
 Name: Poinsettia
 Chart: Hatch
 Stitches: 182
 Thread used: 2.72ft

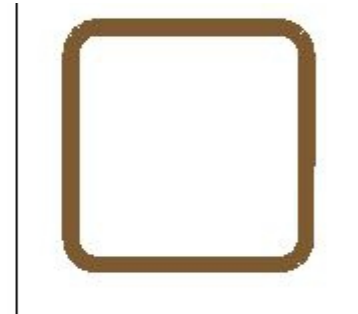


Stop #: 4
 Code: 218
 Name: Blue - Imperial
 Chart: Hatch
 Stitches: 179
 Thread used: 2.67ft

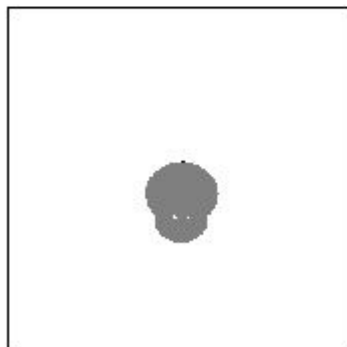


Stop #: 5
 Code: 215
 Name: Linen
 Chart: Hatch
 Stitches: 675
 Thread used: 9.88ft

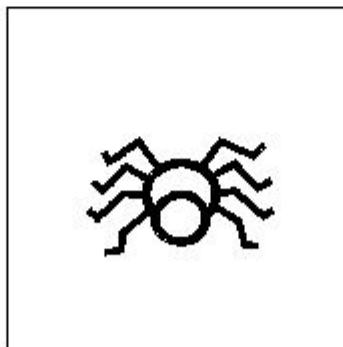
**DECORATIVE STITCHING
 STARTS HERE - STEP 6**



Stop #: 6
 Code: 226
 Name: Brown - Dark
 Chart: Hatch
 Stitches: 2524
 Thread used: 76.50ft



Stop #: 7
 Code: 211
 Name: Grey
 Chart: Hatch
 Stitches: 1138
 Thread used: 22.70ft



Stop #: 8
 Code: 210
 Name: Black
 Chart: Hatch
 Stitches: 2393
 Thread used: 37.99ft

This will stitch out the eyes. It doesn't show up on the graphic because white thread was used.

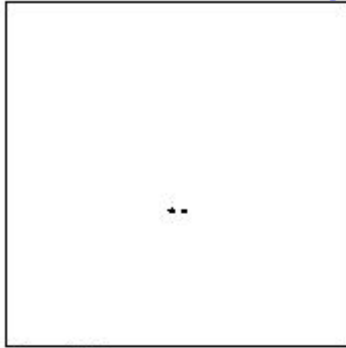
Stop #: 9
 Code: 209
 Name: White
 Chart: Hatch
 Stitches: 300
 Thread used: 4.00ft

SPIDER COASTER

Color Sequence
5x7SpiderGhostCO2
Hatch Embroidery Software

Stitches: 8508 4.80 in
Colors: 7
Zoom: 0.39 4.80 in

STOP HERE



Stop #: 10
Code: 210
Name: Black
Chart: Hatch
Stitches: 92
Thread used: 0.85ft





Stop #: 11
Code: 225
Name: Poinsettia
Chart: Hatch
Stitches: 708
Thread used: 10.65ft

GHOST COASTER

Color Sequence
5x7SpiderGhostCO1

Hatch Embroidery Software

Stitches: 11076  4.80 in
 Colors: 9  4.80 in
 Zoom: 0.39



Stop #: 1
 Code: 225
 Name: Poinsettia
 Chart: Hatch
 Stitches: 246
 Thread used: 3.70ft



Stop #: 2
 Code: 218
 Name: Blue - Imperial
 Chart: Hatch
 Stitches: 71
 Thread used: 2.67ft



Stop #: 3
 Code: 225
 Name: Poinsettia
 Chart: Hatch
 Stitches: 182
 Thread used: 2.72ft

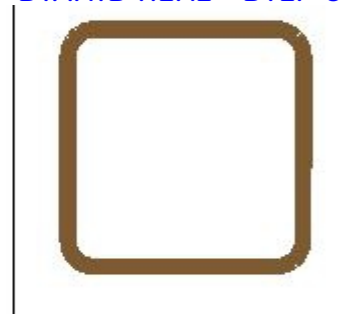


Stop #: 4
 Code: 218
 Name: Blue - Imperial
 Chart: Hatch
 Stitches: 179
 Thread used: 2.67ft



Stop #: 5
 Code: 215
 Name: Linen
 Chart: Hatch
 Stitches: 698
 Thread used: 10.22ft

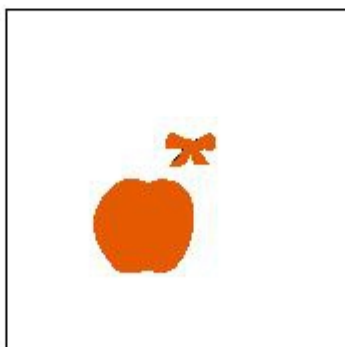
**DECORATIVE STITCHING
 STARTS HERE - STEP 6**



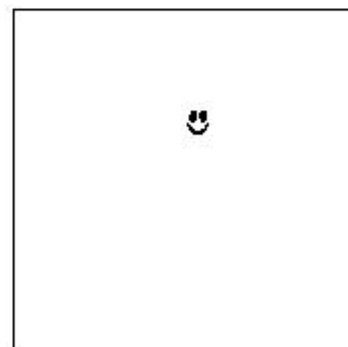
Stop #: 6
 Code: 226
 Name: Brown - Dark
 Chart: Hatch
 Stitches: 2524
 Thread used: 76.50ft

This will stitch out the ghost. It doesn't show up on the graphic because white thread was used.

Stop #: 7
 Code: 209
 Name: White
 Chart: Hatch
 Stitches: 3478
 Thread used: 65.73ft



Stop #: 8
 Code: 214
 Name: Orange
 Chart: Hatch
 Stitches: 2447
 Thread used: 48.89ft



Stop #: 9
 Code: 210
 Name: Black
 Chart: Hatch
 Stitches: 220
 Thread used: 2.38ft

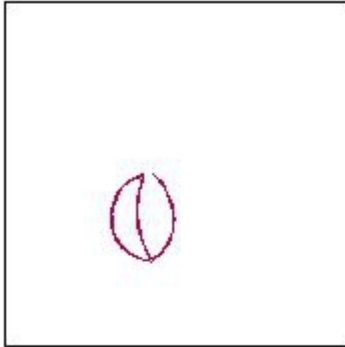
GHOST COASTER

Color Sequence
5x7SpiderGhostCO1

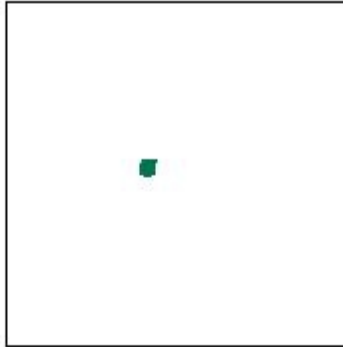
Hatch Embroidery Software

Stitches: 11076 4.80 in
Colors: 9
Zoom: 0.39 4.80 in

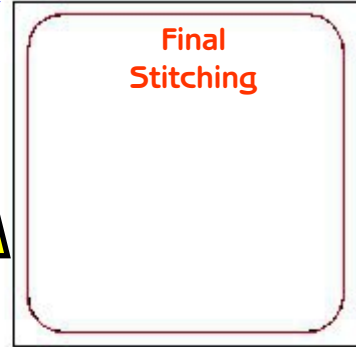
STOP HERE



Stop #: 10
Code: 227
Name: Red - Berry
Chart: Hatch
Stitches: 199
Thread used: 3.20ft



Stop #: 11
Code: 230
Name: Green - Dark
Chart: Hatch
Stitches: 127
Thread used: 1.82ft



Stop #: 12
Code: 225
Name: Poinsettia
Chart: Hatch
Stitches: 705
Thread used: 10.63ft