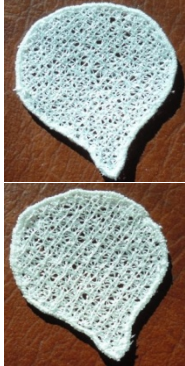


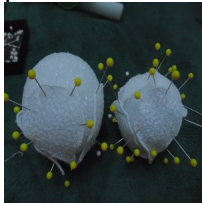
## Magnolia Sculpture or Brooch

All fit the 4x4 Hoop

1. Hoop 2 sheets of Wash A Way
2. Embroider out 4 large petals and 4 small petals for each flower you wish to make.



3. Small petals sewn out for each bud you wish to make.
4. Dry pinned onto Styrofoam balls 2 1/2 inch ball for the large leaf and 2 inch ball for small petals.



5. Pin leaf on a 2.5 inch ball for the brooch and if you want a curled leaf for around the bud on the sculpture find a square piece of styrofoam or whatever that you can pin the leaf onto to make it curl.



When dry..

For the BROOCH.

- 1 Either glue the small stem part together flat as in 1 Magnolia picture



2. Place the small petals in place over the large leaves as in Magnolia Brooch 2 jpg.



3 Cover a small button with a faux fur and glue that into the center of the flower and glue crystals to it.



4. Glue a brooch pin onto the back and you have a beautiful Corsage

For the SCULPTURE

You will need

Wire, Wire Cutters, Glue, Florists tape

I made a bouquet for a friend with the sculpture. Make 4-5 flowers with buds.

To make the sculpture clip the wire to the length of the stem.

Make a curl on top of the wire so that you can glue a piece of faux fur or if you wish some stamens from the craft store and glue the SMALL petals ( for these you use the little triangle on the bottom of the petal that has been dried at a 90 degrees angle from the petal ) onto the stem first and then the LARGE petals, then wrap the florists tape around the bottom of the petals so that it looks like the bottom of a flower. Continue to wrap for about an inch or so and then put in the leaf behind and the small bud in the front. With the wire you can mold the stems any way that you would like them to sit.

To make the buds wrap a small petal around and pin it like in the picture center for Magnolia Sculpture. Then wrap another around it more loosely. For a larger bud wrap a large petal over the 2 smaller ones.



When dry put the wire into the center and glue.

Wrap the florists tape around the bottom of the bud and put a leaf on the back and continue to wrap the florists tape around for about an inch.

Place the small bud and wire next to the blooming flower and continue to wrap all the way to the bottom of the flower.

Magnolia Sculpture Picture



I do hope you enjoy your design and have as much fun making them as I did.

Ardy