

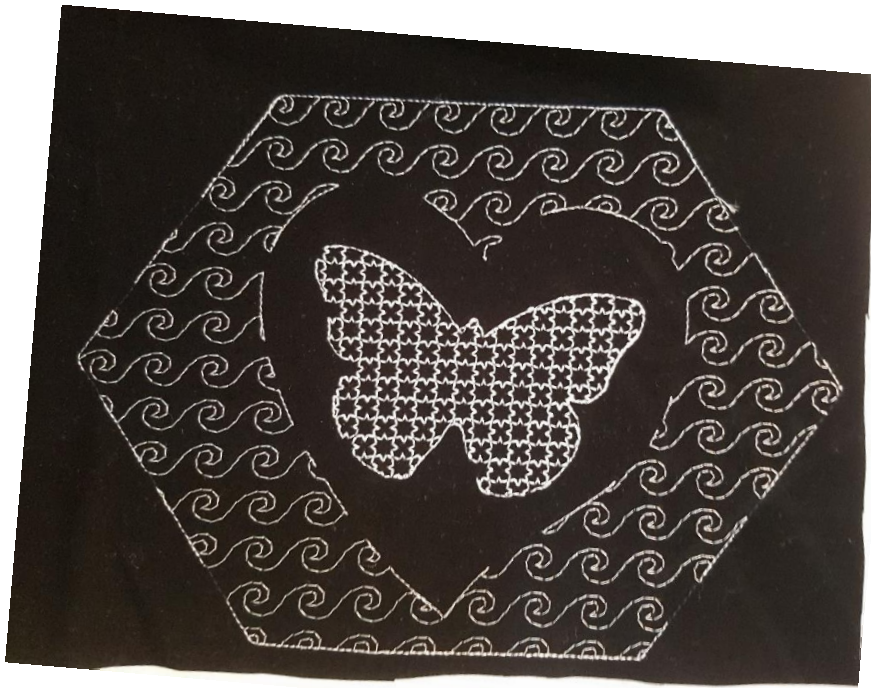
LOVELY BUTTERFLY VARIETY SET

(Filled/embossed design, applique, ITH ornament, ITH coaster, ITH mug-rugs in 2 sizes)

For the mug-rug-



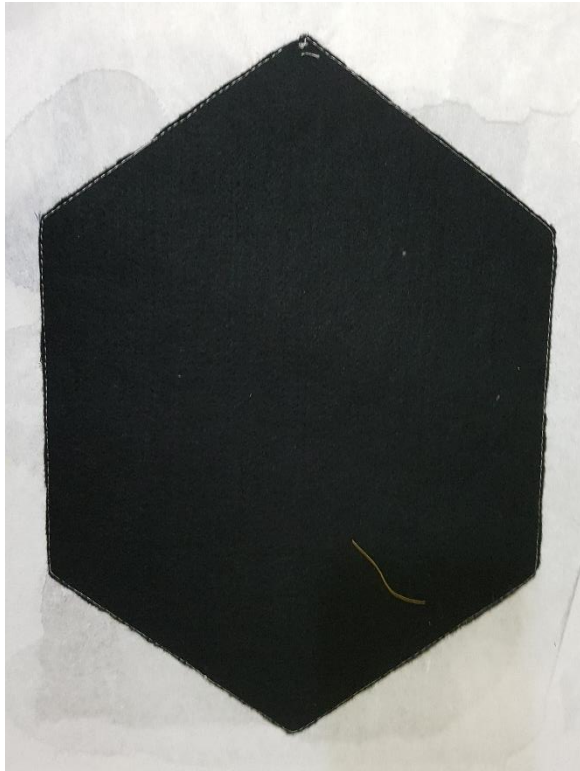
1. Hoop 2 layers of tear away stabilizer.
2. Sew the 1st outline on the stabilizer, place the top fabric right side up over this.
3. Hold it in place and sew the 2nd outline which will tack down the fabric.
4. Change colors as desired and sew the next motif stitches of the base as well as the butterfly.
You may skip any of the motif stitches by simply moving on to the next step.



5. Next will be the filling of the heart.
6. After the filled stitches will be the satin stitches of the butterfly and the heart.



7. Remove hoop from machine and lay a layer of batting or fleece at the back of the hoop, followed by a layer of the back fabric. Tape it in place and sew the next outline stitches.
8. Remove hoop once again and trim all the excess fabric and batting from the 3 layers as close as possible.



9. Get hoop back in the machine and sew the next zigzag stitches.



10. You can stop at this stage if you wish to finish the mug-rug using a sewing machine using binding, piping, ribbon etc.
11. If not, fill the bobbin with the same thread as top thread and sew the next satin edging.
12. Remove hoop and tear away all the excess stabilizer.

For the ornament (hoop size 4x4 inch)-



1. Hoop Tearaway stabilizer, thread machine with a color matching the fabric.
2. Sew the 1st color, the placement line.
3. Lay a piece of fabric or felt covering the outline and sew the 2nd color, the tack down stitch.
4. Change colors as needed and complete the remaining steps.
5. Next is the motif stitching inside the butterfly, this is optional.

You may skip it if you want by simply moving on to the next color.

6. Next is the fill stitches inside the heart.
7. Once this is done, remove the hoop and place the back fabric on the back side of the hoop, right side facing down (not towards the hoop) and tape it in place.

NOTE: If you wish to add a loop for hanging, place it sandwiched between the two layers, tape to keep it in place.

Add a layer of batting or fleece if your fabric is lightweight, or instead of the back fabric you can simply use a coordinating layer of felt or fleece.

8. Get the hoop back in the machine and stitch the next color, this will join the backing to the front.
9. Remove hoop once again and carefully trim the excess fabric from both top and bottom layers as closely as possible.
10. Next will be the satin stitching all around, for this use the same thread in the bobbin as your top thread.
11. Unhoop and remove the ornament from the stabilizer.

For the coaster-



SAME PROCESS AS THE ORNAMENT!

For the Applique-



1. Hoop your fabric with suitable stabilizer. Sew the 1st color, the placement outline.



2. Lay the applique fabric covering the outline and sew the 2nd color, the tack down stitches.



3. Now there are 2 options to trim the excess fabric.
Either trim only around the heart shape and proceed with step 4.



2nd option is to trim the inside of the butterfly as well, for an embossed or a reverse applique look.



4. Next will be the motif filling of the butterfly, this is optional. If you wish to skip this, simply move on to the next color.
5. Next will be the satin stitching of the butterfly and the heart.
6. The last decorative stitches is also optional, you may or may not stitch it.